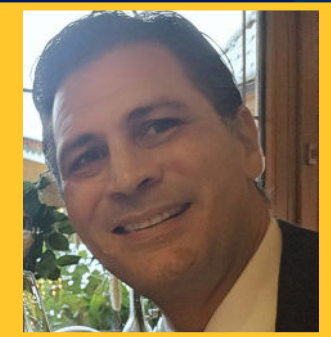




Sonya Goykhman



Chris Harden



Sergio Leemann



Leila O'Carra

ALFA International Welcomes Four New Client Advisory Board Members

ALFA International (ALFAI) is excited to announce the appointment of **Sonya Goykhman, Chris Harden, Sergio Leemann** and **Leila O'Carra** to its Client Advisory Board (CAB) for a three-year term.

Sonya Goykhman serves as Director, Corporate Counsel in the Litigation Group for Starbucks Coffee Company. In her role, Sonya oversees and manages complex liability, commercial, real estate, discrimination, and ADA litigation for retail stores in the Americas, provides legal advice and counsel to internal clients, and works with cross-functional teams to reduce risk and elevate the Starbucks global brand. Sonya leads the strategy for the company's general liability portfolio, ensuring effective management and resolution of cases. Before joining Starbucks, Sonya worked as a civil litigator.

Sonya commented, "Being part of ALFAI's CAB is a true honor. ALFAI is an exceptional network of diverse legal professionals. I've witnessed firsthand the immense value of the connections and the strong partnerships ALFAI fosters. I am excited to contribute my experience to the CAB and look forward to collaborating with ALFAI members and clients to drive innovation and excellence."

Chris Harden is the Global Director of Risk Management for AGCO Corporation. Since joining AGCO in 1991, Chris has been a part of the management team that grew AGCO from a \$200 million startup farm equipment company into a \$14 billion global corporation.

Chris remarked, "At AGCO Corporation, we take pride in manufacturing agricultural equipment worldwide, and ensuring the safety and reliability of our products is paramount. For all our product liability matters in the U.S. and Canada, we exclusively use ALFAI trial counsel. ALFAI attorneys deliver exceptional legal representation and have a deep understanding of our industry. ALFAI attorneys are not just outside counsel; they are our strategic partners, providing us with confidence in the courtroom and peace of mind in the boardroom. I am honored to be part of ALFAI's CAB."

Sergio Leemann is Director for Aldo Group International GmbH in Switzerland and is head of the international legal department of the Aldo Group. The Aldo Group is a global market leader in the footwear industry and produces and sells footwear, accessories and fashion jewelry under its own brands and other brands worldwide. Before joining the Aldo Group, Sergio was part of the international legal division at the Swarovski Corporation and also spent several years in private practice. In addition, Sergio serves as a lecturer for a Swiss higher education institution in international franchise matters.

continued on Page 2



ALFA International Welcomes Four New Client Advisory Board Members

Page 2

Sergio voiced, "I am proud to be part of ALFAI's CAB! ALFAI is a great network and an invaluable resource for me and my company. Having access at a moment's notice to an international network of law firms and being able to trust them from the start makes my life easier. I'm working with many firms worldwide, and the service through ALFAI has always been outstanding. I'm looking forward to my continued collaboration and relationships with ALFAI for years to come."

Leila O'Carra is Director, Associate General Counsel for Tempur Sealy and is responsible for Tempur Sealy's litigation and employment matters. She joined Tempur Sealy in February 2018. Before joining Tempur Sealy, Leila worked in private practice for a regional law firm for 11 years and then at a national labor and employment law firm for just over a year.

Leila stated, "I lean on the ALFAI network to find experienced litigation counsel across the country. ALFAI has proven to be a valuable resource for me. I am pleased to join ALFAI's CAB and look forward to collaborating with my peers to offer insights and feedback to ALFAI members."

Jessica Zaroski Bauer, CEO of ALFAI, asserted, "We are proud to welcome these exceptional professionals to ALFAI's CAB. Their valuable insights across different industry verticals will help move ALFAI forward in this evolving legal marketplace."