



ALFA International

THE GLOBAL LEGAL NETWORK



2026 PROFESSIONAL LIABILITY PRACTICE GROUP SEMINAR

February 19-20, 2026
The Inn at Serenbe | Chatt Hills, Georgia

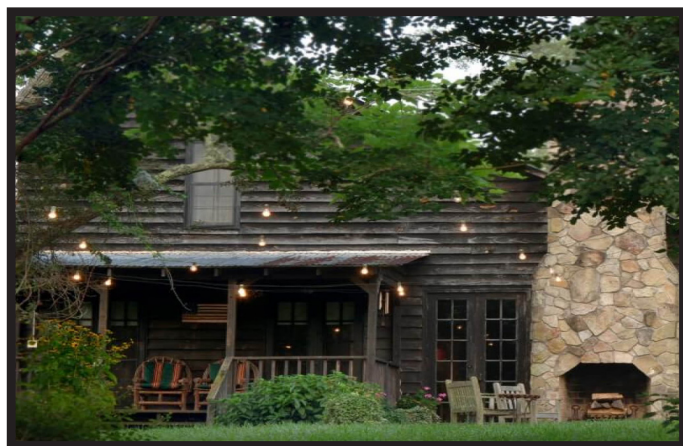
www.ALFAInternational.com

2026 PROFESSIONAL LIABILITY PRACTICE GROUP SEMINAR

The Inn at Serenbe | Chatt Hills, Georgia
February 19-20, 2026

COME JOIN US ON THE FRONT PORCH as we hear from ALFA International (ALFAI) attorneys and clients who specialize in professional liability about the benefits and challenges that “modern technology” is bringing our way. We will have an opportunity to discuss both emerging trends and the influence of Artificial Intelligence in discovery and dispute resolution as well as the risks associated with cyber attacks, which are growing in scale and occurrence. We will hear about innovations in mock trials and how to advance critical defense strategies for juries. Finally, there will be discussion of the tort reform effect of higher and higher verdicts in states such as Georgia and Florida. This will be a great opportunity to have thoughtful conversations with ALFAI attorneys and clients about the future of navigating this changing litigation landscape.

Jennifer “JD” Devereaux Segers, 2026 Program Chair,
HUIE, FERNAMBUCQ & STEWART, LLP, Birmingham, AL



ABOUT THE INN AT SERENBE

Conveniently located 25 miles from Hartsfield-Jackson International Airport, The Inn at Serenbe is a luxury retreat nestled on 2,000 acres of preserved forestland in Chatt Hills, Georgia. The Inn is known for its focus on nature, wellness and farm-to-table dining. The property offers a wide array of amenities, including miles of hiking trails, a swimming pool, hot tub and croquet lawn, along with unique experiences like spa treatments, horseback riding, goat yoga and farm tours. Guests can stay in various accommodations, enjoy gourmet food at The Farmhouse Restaurant & Bar and connect with nature on the serene, wooded grounds.

What is ALFA International?

ALFA International is the premier global network of independent law firms comprised of accomplished trial and business counsel. Founded in 1980, ALFAI was the first and remains one of the largest and strongest legal networks worldwide. ALFAI member firms meet high standards to be part of the network and are well respected by their peers in the legal and business community. ALFAI has 140+ member firms worldwide, including 70 U.S. firms maintaining offices in 95 of the 100 largest metropolitan areas and 70 international firms. Since ALFAI firms are not in direct competition, ALFAI attorneys build strong, trusted relationships with one another. ALFAI’s mission is to utilize these relationships to provide high-quality, cost-efficient legal services wherever clients need them. When necessary, ALFAI attorneys can connect clients to their ALFAI colleagues anywhere worldwide whom they trust will handle their client’s legal needs with the same attention and care.

SEMINAR SCHEDULE

THURSDAY, FEBRUARY 19

4:00 P.M. – 5:00 P.M.

Rooted in Nature: A Welcome Experience Nature Tour

Take a break after your travels and connect with fellow attendees while you immerse yourself in the natural beauty that surrounds the Serenbe Property. Certified herbalist Heather Ruth will highlight local flora, fauna, and Serenbe's history. Whether you're a nature enthusiast or simply seeking a peaceful escape after a day of travel, this experience promises to be both educational and rejuvenating.

Attire: Come as you are, casual attire.

6:00 P.M. – 9:00 P.M.

Welcome to the Inn at Serenbe! Cocktail Reception & Dinner on Wrap Porch

Join us for a lively reception and buffet dinner on the Inn's beautiful Wrap Porch. It's a chance to catch up with familiar faces and spark conversations with new ones before the seminar officially begins the next morning.

9:00 P.M. – 11:00 P.M.

Bonfire Under the Stars Located in the Bonfire Area

Not quite ready to go to sleep? Then gather around the glow of a crackling bonfire, soaking in the cozy ambiance under a starlit sky. Grab a lantern, map and a S'more's kit and join us for this special after-hours experience.

FRIDAY, FEBRUARY 20

7:00 A.M. – 8:00 A.M.

Buffet Breakfast on Wrap Porch

8:00 A.M. – 1:05 P.M.

Program Sessions in Oak Room

8:00 A.M. – 8:10 A.M.

Welcome & Introduction

Speakers:

Jessica Zaroski Bauer, *Chief Executive Officer*, ALFA INTERNATIONAL, Chicago, IL

Jennifer "JD" Devereaux Segers, *2026 Program Chair*, HUIE, FERNAMBUCQ & STEWART, LLP, Birmingham, AL

8:10 A.M. – 9:00 A.M.

Exploring the Practical Applications and Future Trajectory of AI in Legal Practice: From Cutting-Edge Arbitration and Classifier Models to Hallucinations and Pro Se AI Pleadings

Artificial intelligence is reshaping the legal profession, from document drafting to dispute resolution. This panel moves beyond the buzzwords to examine the real-world impacts, emerging trends, and ethical challenges of AI in practice. We'll discuss AI-driven arbitration, cost-effective applications beyond ChatGPT-generated briefs, the growing use of free LLMs by pro se litigants to produce polished pleadings, and the expanding ecosystem of AI tools available to legal professionals. The conversation will also tackle critical questions: How much AI is too much in practice? What should clients reasonably expect, and pay for, when AI is involved? And does AI truly deliver cost savings, or simply shift the workload? Designed to be interactive, this session will invite your perspectives on billing, ethics, and tool adoption as we explore how to strike the right balance between innovation, efficiency, and professional responsibility.

Speakers:

Brian Sableman, *Moderator*, BROWN & JAMES, P.C., St. Louis, MO

Kobi L. Gibbs, *Senior Claims Manager*, ASPEN INSURANCE, Missoula, MT

Kimo Gandall, *CEO*, ARBITRUS.AI, Dallas, TX

D. Jay Davis, Jr., CLEMENT RIVERS, LLP, Charleston, SC

SEMINAR SCHEDULE

9:00 A.M. – 9:15 A.M.

Roundtable Discussion

Led by table captains.

9:15 A.M. – 9:25 A.M.

Break

9:25 A.M. – 10:15 A.M.

**Relax, This Brochure Is Safe. But If It Weren't,
We Could Provide Advice on Awareness and
Protection Against a Cyberattack**

Cyberattacks remain commonplace across all industries. This panel will explore the growing legal trends surrounding cyberattacks and the implications for the legal industry. We will provide practical advice for developing cybersecurity awareness and a cybersecurity plan. We will also discuss coverage-related matters arising from cyberattacks.

Speakers:

Jeffrey S. Hengeveld, *Moderator*, PLUNKETT COONEY, Bloomfield Hills, MI

Laura Hawkins, *Assistant Vice President, Claims*, AT-BAY, Atlanta, GA

Steven H. Schwartz, BROWN & JAMES, P.C., St. Louis, MO

10:15 A.M. – 10:30 A.M.

Roundtable Discussion

Led by table captains.

10:30 A.M. – 10:40 A.M.

Break

10:40 A.M. – 11:30 A.M.

**Jury Consultants: From Mock Trials to Voir
Dire—Innovations in Pre-Trial Strategy**

Get ready to rethink your litigation toolkit! Join us as we pull back the curtain on inventive and advanced uses of focus groups and mock trials. This session goes beyond the basics—discover how to leverage these techniques for purposes that range from testing case themes and refining witness presentations to evaluating jury reactions in complex cases. Whether you're a risk manager, trial lawyer, or in-house counsel, you'll come away with creative ideas and actionable guidance to strengthen your litigation strategy and gain a decisive edge in the courtroom. Panelists will share real-world insights, tech-savvy solutions, and field-tested methods to help you turn feedback into success, all while keeping things engaging and practical for today's litigation landscape.

Speakers:

Dina M. Cox, *Co-Moderator*, LEWIS WAGNER & TRIMBLE, Indianapolis, IN

Janelle P. Kilies, *Co-Moderator*, LEWIS WAGNER & TRIMBLE, Indianapolis, IN

Wendy Harris, *Senior Vice President, Claims*, VGM INSURANCE SERVICES, Waterloo, IA

11:30 A.M. – 11:45 A.M.

Roundtable Discussion

Led by table captains.

11:45 A.M. – 11:55 A.M.

Break

SEMINAR SCHEDULE

OPTIONAL ACTIVITY

11:55 A.M. – 12:45 P.M.

Tort Reform on the Horizon: Insights from Georgia and Florida's Legislative Landscapes

Much-needed tort reform statutes were enacted in two of the nation's worst judicial "hellholes"—first in Florida, followed most recently by Georgia. Are they all they're cracked up to be? Hear practical insights from defense counsel and risk professionals about how well the reforms have worked in the trenches, the extent to which they have stemmed the tide of nuclear verdicts, and legal attacks on limitations.

Speakers:

Christine L. Mast, *Moderator*, HAWKINS PARNELL & YOUNG, LLP, Atlanta, GA

David Robles, *Vice President*, ALLIED WORLD INSURANCE COMPANY, Farmington, CT

Kaitlin Weaver, *Senior Financial Products Claim Manager*, GREAT AMERICAN INSURANCE GROUP, Wilmington, DE

Ralph L. Marchbank, *Professional Liability Practice Group Chair*, DICKINSON & GIBBONS, P.A., Sarasota, FL

12:45 P.M. – 1:00 P.M.

Roundtable Discussion

Led by table captains.

1:00 P.M. – 1:05 P.M.

Closing Remarks

Speaker:

Ralph L. Marchbank, Jr., *Professional Liability Practice Group Chair*, DICKINSON & GIBBONS, P.A., Sarasota, FL

1:05 P.M. – 2:00 P.M.

Lunch

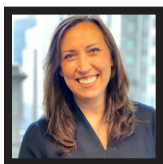
2:00 P.M. – 3:00 P.M.

Coffee Tasting at Birdhouse Coffee Room

Whether you're a coffee connoisseur or simply looking to try something new, join us for a coffee tasting at the lovely Birdhouse Coffee Room before making the journey home.



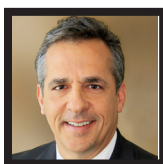
SPEAKERS



JESSICA ZAROSKI BAUER joined ALFA International (ALFAI) in 2004 as a Coordinator of Events & Member Services. She then worked for several years as a Marketing Manager, Chief Events Officer and Chief Operating Officer. After 17 years with the association, she accepted her current role as Chief Executive Officer. In this position she is the strategic thought leader of the organization, working closely with the Board of Directors and the various ALFAI committees. She manages headquarters staff and maintains constant communication with association members. Jessica oversees the member recruitment, development and retention programs as well as the marketing and business development initiatives for the organization. Prior to joining ALFA International, she worked in the marketing department of the Chicago-based law firm of Gardner, Carton & Douglas, LLP (now Faegre Drinker Biddle & Reath). She is a graduate of the University of Iowa Tippie College of Business (Go Hawkeyes!) and is an avid college football fan. In her spare time Jessica can be found enjoying family time with her husband Harry and her two young daughters, Greta and Vivian. She also enjoys swimming in Lake Michigan, playing beach volleyball and watching Oscar nominated movies.



DINA M. COX is a partner with Lewis Wagner & Trimble, ALFA International's member firm in Indianapolis, Indiana. She is a legal strategist, trial attorney and nationally recognized jury consultant, committed to responsive client service as a top priority. Dina leverages decades of courtroom and trial expertise to lead sophisticated mock trial and jury consulting services through Lewis Wagner & Trimble's renowned litigation support practice. Dina has served as lead counsel in numerous lawsuits and bet-the-company litigation involving multi-million-dollar claims ranging from breach of contract, false advertising, unfair competition, unfair commercial practices, consumer fraud and breach of warranty to claims of serious injury caused by product liability and professional negligence. She defends mass torts, class actions, government enforcement actions, drug and medical device cases, toxic tort and chemical exposure cases and professional liability lawsuits, including legal malpractice. Her mass tort and class action defense work is national in scope and has included lawsuits filed in venues across the country as well as multi-district litigation. What sets Dina apart is her integral role in designing, executing and analyzing mock trial and focus group exercises for law firms and trial teams nationally. Dina and her team offer end-to-end consulting that includes synthesizing case information, preparing and presenting sides for mock trials, collecting and evaluating juror feedback and providing actionable data-driven strategy to refine case themes and presentations before trial. Dina's hands-on approach has helped litigators and clients gain decisive insights, optimize trial strategies, and strengthen outcomes—often resulting in improved settlement opportunities and more favorable trial presentations.

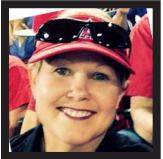


D. JAY DAVIS, JR. is a partner with Clement Rivers, LLP, the ALFA International member firm in Charleston, South Carolina. Jay is chair of the firm's Professional and Medical Liability practice groups and the firm's Business Litigation practice group. Jay is a fellow in the American College of Trial Lawyers®, is rated AV® Preeminent Peer Review Rated Judicial of Martindale-Hubbell and has been selected as a member of Super Lawyers® in the areas of Professional Liability defense and Best Lawyers in America® for commercial litigation. Jay is also a member of the American Board of Trial Advocates ("ABOTA"). Jay grew up in Charleston and earned a master's degree from the University of South Carolina in 1993. Jay then graduated cum laude from the University of South Carolina School of Law, where he was also an associate editor of the South Carolina Law Review.

SPEAKERS



KIMO GANDALL is a serial founder, Professional Registered Parliamentarian, and graduate of Harvard Law School. He is published in the fields of artificial intelligence and institutional logic, with research applying machine learning models to predict United Nations voting patterns and U.S. Supreme Court outcomes. Beyond his academic work, Kimo has been at the forefront of integrating AI into legal practice, drawing on both entrepreneurial and professional experience to explore how emerging technologies can reshape arbitration, litigation and institutional governance.



KOBI L. GIBBS is a Senior Claims Examiner for Professional Liability and Cyber Claims with Aspen Insurance and works remotely from Missoula, Montana. Kobi joined Aspen in February 2023 with over 19 years of experience managing complex, high-exposure legal malpractice claims, coverage litigation, cyber and employment liability claims. At Aspen, Kobi manages large law firm and accounting firm malpractice claims as well as large cyber exposures. She is experienced in handling complex legal claims, which often involve policy limits or excess policy limits exposure.

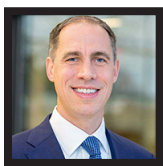


WENDY HARRIS is the Senior Vice President of Claims for VGM Insurance Services, an Iowa-based MGA. VGM provides specialty insurance programs to post-acute healthcare providers, including home medical equipment, home health and hospice, physical therapy, orthotics and prosthetics, medical manufacturer reps and distributors, as well as allied healthcare providers. Wendy was previously a senior claims specialist for Pharmacists Mutual Insurance Company, an Iowa-based specialty carrier insuring pharmacists, dentists, home medical equipment providers, home healthcare providers and other healthcare professionals in 49 states. Wendy was with Pharmacists Mutual for 10 years. Prior to joining Pharmacists Mutual, Wendy spent 14 years as a medical malpractice claims specialist for other Midwest-based professional liability carriers. Prior to working on the insurance defense side, she worked for nine years as a litigation assistant in a plaintiff personal injury/medical malpractice law firm.



LAURA HAWKINS is a licensed attorney and independent adjuster with more than 15 years of insurance industry experience. Laura manages a team of skilled Claims Specialists and Claims Counsel at At-Bay; her team helps insured businesses investigate and manage data breaches and network security intrusions, mitigate liability and exposure on cyber claims, including class action litigation and regulatory investigations, and handle complex technology errors and omissions and media liability claims. Customer service is a top priority for Laura, and she is skilled at providing transparency and guidance while collaborating with insureds, brokers, counsel and other third-party vendors throughout the lifecycle of a claim. Laura began her in-house insurance career with a Lloyd's specialist insurer, where she handled professional liability claims. Prior to her in-house experience, Laura worked in private practice at a civil litigation firm in Atlanta, Georgia.

SPEAKERS

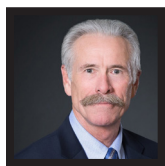


JEFFREY S. HENGEVELD is a shareholder of Plunkett Cooney, ALFA International's member firm in Bloomfield Hills, Michigan, and is a member of the firm's Board of Directors. He is a trial attorney who primarily focuses his practice in the areas of professional liability, class actions and consumer litigation. He serves as co-leader of the firm's Professional Liability Practice Group and regularly defends attorneys, accountants and other professionals in malpractice actions. He also regularly advises attorneys and accountants on ethical issues and licensing matters, including answering a legal and ethical hotline for the Michigan Association of Certified Public Accountants. He is a published author on the issue of accounting standards and fraud deterrence and on professional liability insurance coverage. He was awarded an AV-rating from Martindale-Hubbell and named a Top Lawyer in Legal Malpractice Law by *dbusiness Magazine* and a "Super Lawyer" by Michigan Super Lawyers. He received his BA from Michigan State University and his JD magna cum laude from Michigan State University College of Law, where he was a member of the Law Review.



JANELLE P. KILIES is a partner with Lewis Wagner & Trimble, the ALFA International member firm in Indianapolis, Indiana. In addition to her distinguished litigation and employment counsel, Janelle is an accomplished mock trial and jury consultant who routinely designs and leads innovative litigation simulations for clients and trial teams nationwide. She spearheads the development, planning, and presentation of mock trials and focus group exercises, harnessing her depth in trial advocacy to shape compelling case themes, analyze juror perceptions and provide data-driven strategic recommendations. Janelle's consulting portfolio includes dozens of custom jury research projects, ranging from single-issue focus groups to multi-day, multi-phased mock trials addressing the most challenging liability and damages questions. Her programs distill juror feedback into actionable insights that inform theme-testing, storytelling refinement, witness evaluation and case value analysis. Clients rely on her skill in translating complex legal and factual disputes for lay audiences and crafting clear, persuasive presentations that anticipate and overcome juror skepticism. In her litigation practice, Janelle concentrates on the defense of employment-related claims, including employment discrimination, wage disputes, wrongful termination, employment agreement disputes, unfair labor practices and civil rights claims. She offers proactive prevention counseling, drafting employment policies and practices, guiding employee discipline and termination and advising on emerging workplace issues. Janelle's extensive mass tort and class action experience in product liability and consumer protection cases informs her approach to both litigation and consulting, ensuring clients benefit from cutting-edge trial strategies and creative, tech-forward solutions.

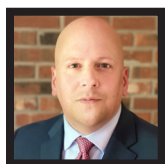
SPEAKERS



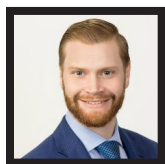
RALPH L. MARCHBANK, JR. is a 35-plus-year partner with Dickinson & Gibbons, P.A., the ALFA International member firm in Sarasota, Florida. His practice areas include medical negligence and legal malpractice defense, and medical product liability defense. He has tried well over 100 jury trials, including medical negligence and legal malpractice claims. Ralph is a past President of the Florida Defense Lawyers Association and a member of the American Board of Trial Advocates (past Florida Bar representative); the International Association of Defense Counsel; DRI; the American Bar Association; past Master of the Sarasota County Chapter of the American Inns of Court; and involved in other professional organizations. He graduated from the University of Florida College of Law in 1980.



CHRISTINE L. MAST is general counsel and leads the Professional Liability Practice Group of the litigation defense firm of Hawkins Parnell & Young, LLP, the ALFA International member firm in Atlanta, Georgia. She is a former chair of ALFA International's Professional Liability Practice Group. Christine has devoted the last 33 years to defending legal professionals faced with malpractice claims, lawsuits, disciplinary and ethics issues. A testament to her skillful, pragmatic handling of serious and sensitive claims, she is regularly hired by opposing counsel when they find themselves on the wrong end of a claim. Outside of the courtroom, Christine represents clients in sanctions and disciplinary matters. Christine also represents insurance agents and brokers, appraisers, surveyors, title examiners and assorted other professionals. Her successful representation is evident in a long list of appellate decisions affirming favorable rulings for her clients, including landmark cases before the Supreme Court of Georgia. Christine has been repeatedly included as one of Georgia's top 100 lawyers and top 50 women lawyers and was selected in several years by Best Lawyers as Lawyer of the Year in professional malpractice defense. She teaches and writes regularly on professional liability, malpractice avoidance, ethics, abusive litigation and trial procedures.

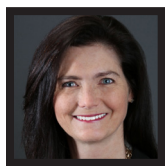


DAVID ROBLES is an Assistant Vice President in the North American Claims Group for Allied World Insurance Company. He is currently responsible for managing professional liability claims against lawyers, insurance agents, insurance companies, architects, engineers, surveyors and other miscellaneous professionals. Prior to joining Allied World, David spent approximately 18 years practicing law in Connecticut with a concentration in insurance defense. This included extensive trial work as staff counsel for Infinity Property & Casualty Corporation and Nationwide Mutual Insurance Company. David earned a B.S. degree from Western New England College and a J.D. degree from the University of Connecticut School of Law. He is admitted to practice law in Connecticut and before the United States District Court for the District of Connecticut.

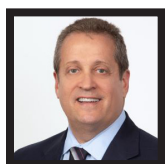


BRIAN SABLEMAN is an attorney with Brown & James, PC, the ALFA International member firm in St. Louis, Missouri. He has written for the ALFAI compendia concerning Missouri law. Brian's practice focuses on professional liability defense, insurance coverage, unfair competition, business litigation and appeals. Brian has tried cases to a jury in state and federal court and has argued before the Missouri Supreme Court. Born and raised in St. Louis, Brian graduated magna cum laude from St. Louis University School of Law, where he was also managing editor for an issue of the St. Louis University Law Journal.

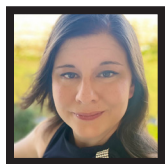
SPEAKERS



JENNIFER "JD" DEVEREAUX SEGERS is a partner with Huie, Fernambucq & Stewart, LLP (Huie), ALFA International's member firm in Birmingham, Alabama. JD joined Huie in 1995 and, since then, has successfully litigated on behalf of numerous companies. She has built a successful practice focusing on medical malpractice, dental malpractice, insurance litigation, long-term care and nursing home liability, pharmaceutical liability, professional liability and professional license defense. She also frequently lectures on medical malpractice and related topics for private insurance firms. JD has been listed by The Best Lawyers in America since 2015 for Litigation – Health Care, listed since 2015 for Insurance Law and Litigation and listed since 2020 for Medical Malpractice Law – Defendants. She has been recognized as a B-Metro Magazine Top Attorney since 2017 and was named Litigation Insurance "Lawyer of the Year" by Best Lawyers in 2017. JD is an active member of many industry organizations, including the Alabama Defense Lawyers Association, Alabama Nursing Home Defense Lawyers Association, Birmingham Bar Association, Defense Research Institute and International Association of Defense Counsel.



STEVEN H. SCHWARTZ is a shareholder of Brown & James, P.C., ALFA International's member firm in St. Louis, Missouri. He has represented lawyers and other professionals for over 35 years and has obtained several defense jury verdicts in professional liability cases. In addition to lawyers, Steve has represented accountants, insurance agents and brokers, real estate brokers, title companies, appraisers, debt collectors and other professionals. He also defends director and officer claims and advertising injury claims for public and private companies and non-profit companies in various cases, including trademark and copyright disputes, vendor disputes, construction disputes, disputes with competitors and homeowner association claims. He received his J.D. with Honors from George Washington University and his B.A. with Distinction from Indiana University.



KAITLIN WEAVER is a Senior Financial Products Claims Manager with Great American Insurance Group's Professional Liability Division, primarily handling miscellaneous professional liability, accountants' liability and excess lawyers' liability errors and omissions claims. Kaitlin is a 2008 graduate of Drexel University (Philadelphia, PA), where she earned a degree in Business Administration. She subsequently attended the Drexel University Thomas R. Kline School of Law, where she obtained her J.D. in 2011. Prior to joining Great American in 2015, Kaitlin worked in private practice at a Philadelphia-based insurance defense litigation firm.

GENERAL INFORMATION

LOCATION

The Inn at Serenbe
10950 Hutcheson Ferry Road
Chattahoochee Hills, GA 30268
770.463.2610

HOTEL WEBSITE: <https://www.serenbeinn.com/>

REGISTRATION

Please contact ALFAI Headquarters to register.

ATTENDANCE IS OPEN ONLY TO ALFAI MEMBERS AND THEIR INVITED GUESTS AND IS LIMITED TO AGES 21+.

ATTIRE

The attire for the educational sessions and social event is "business casual."

SPECIAL ACCOMMODATION

If you need any special accommodations, including a nursing room, special dietary meals, ADA access or other needs, please reach out to ALFAI staff in advance of the meeting and we will ensure that necessary accommodations are provided.

CLE CREDIT

ALFA International is an approved CLE provider in Illinois, California & Pennsylvania and certifies this program has been approved for four hours of general CLE in these states. However, seminars are designed to meet CLE requirements, regardless of jurisdiction. To receive CLE credit outside of these states, attorneys should apply directly to their state's governing CLE board. Helpful links and information on how to apply for course credit are available on the ALFA International website and staff are available to assist with any concerns.

CE CREDIT

ALFA International is an approved CE provider in Texas and certifies this program has been approved for four hours of CE credit. In order to receive credit, you will be asked to sign in for each course and complete a program survey. You will receive a certificate of completion following the event. ALFA International staff are available to assist with any concerns.

SEMINAR CONTACT

Alison Gilman
agilman@alfainternational.com