

## 2026 Asian & Australasian Regional Meeting

13-15 May 2026 | Andaz Tokyo Toranomon Hills | Tokyo, Japan



### PROGRAM OUTLINE

WEDNESDAY, 13 MAY

17.30 – 18.45

#### SKYLINE COCKTAILS

##### [Andaz Hotel Rooftop Bar](#)

Gather for cocktails at the Andaz Hotel's rooftop bar on the 52nd floor, enjoying panoramic views stretching across Tokyo's skyline, Tokyo Bay, and the surrounding cityscape. This will be a casual gathering rather than a private event, and guests will be responsible for purchasing their own drinks.

19.00 – 21.00

#### WELCOME DINNER AT MICHELIN STAR RESTAURANT

##### [Daigo Atago](#)

2-3-1 Atago, Minato-ku

The event will begin with a tofu-based Buddhist-inspired dinner at Daigo Atago, featuring exquisite cuisine and a tranquil view of the Japanese garden.

**Transportation:** Please meet in the lobby at 18.45 if you'd like to walk to the dinner location as a group. It's approximately a 10-minute walk.

**Attire:** Business casual attire is appropriate. Shoes will be removed for dinner. Please make sure to wear appropriate socks or stockings.



**THURSDAY, 14 MAY**

6.45 – 10.30

**BREAKFAST AT LEISURE**

Andaz Hotel

Breakfast at your leisure is included in your hotel room rate.

**SESSIONS AND LUNCH**

9.00 – 16.15

**ATSUMI & SAKAI OFFICE BUILDING COMPLEX**

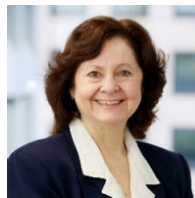
Hibiya Kokusai Bldg.  
2-2-3 Uchisaiwaicho  
Chiyoda-ku, Tokyo 100-0011  
8th floor, Elevator Bank C

***Transportation:** The Hibiya Kokusai Bldg. is approximately a 15-minute walk from the Andaz Hotel. If you'd like to walk over with the group, please meet in the lobby at 8.30.*

***Attire:** Business casual attire is appropriate.*

9.00 – 9.10

**WELCOME REMARKS AND INTRODUCTION OF NEW MEMBERS**



**Bonnie Dixon**  
*Partner*  
*Host Firm*  
ATSUMI & SAKAI  
Tokyo, Japan



**Brendan Taylor**  
*Chair, ALFAI Asia & Australasia Regional Group*  
MILLS OAKLEY  
Perth, Australia



**Hiroo Atsumi**  
*Managing Partner*  
*Host Firm*  
ATSUMI & SAKAI  
Tokyo, Japan



**Jessica Zaroski Bauer**  
*Chief Executive Officer*  
ALFA INTERNATIONAL  
Chicago, Illinois

9.10 – 10.00

**KEYNOTE SESSION: FORMER COMMISSIONER OF THE MINISTRY OF FINANCE**



**Nobuchika Mori**  
*Former*  
*Commissioner of the*  
*Ministry of Finance*  
Tokyo, Japan

10.00 – 11.15

**INBOUND INVESTMENT IN THE REGION**

The panel will discuss recent legal developments and regulatory restrictions on inbound investment in each of their jurisdictions.



**Tomotaka Tokuno**  
*Moderator*  
ATSUMI & SAKAI  
Tokyo, Japan



**Hijoung (Kate) Oh**  
BARUN LAW  
Seoul, South Korea



**Dana Marshad**  
CHARLES RUSSELL  
SPEECHLYS LLP  
Manama, Bahrain



**Andrew Crean**  
MILLS OAKLEY  
Perth, Australia



**Hien Nguyen**  
ATIM LAW FIRM  
Hanoi, Vietnam



**Suhan Khan**  
ACCORD CHAMBERS  
Dhaka, Bangladesh

11.15 – 11.30

**BREAK**

11.30 – 12.15

**ARTIFICIAL INTELLIGENCE: BEST PRACTICES FOR LAWYERS**

This training session will cover practical and ethical best practices for using AI in legal work, along with strategies for training and mentoring new lawyers in the responsible and effective use of these tools.



**Daniel Jarrett**  
*Moderator*  
ATSUMI & SAKAI  
Tokyo, Japan



**Maurice Rabb**  
*Business Development  
Manager*  
LEXISNEXIS JAPAN  
Tokyo, Japan

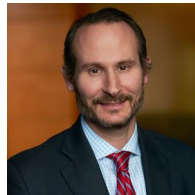


**Victor Chang**  
LCS  
Taipei, Taiwan

12.15 – 13.00

### EMERGING LITIGATION AND DISCOVERY CHALLENGES IN ASIA

This panel will explore discovery issues across Asia for Asian entities involved with cross-border litigation. Structured settlements for US commercial litigation will also be discussed, as well as the growing challenges of managing cross-border e-discovery, data privacy, and regulatory compliance in complex disputes.



**Jordan Stern**  
*Moderator*  
BECKER, GLYNN,  
MUFFLY, CHASSIN &  
HOSINSKI LLP  
New York City, NY,  
U.S.



**Nyssa Gomes**  
*Vice President*  
STANDARD CHARTERED  
BANK  
Singapore



**Don Engels**  
*Settlement  
Consultant*  
RINGLER  
ASSOCIATES  
Chicago, IL, U.S.



**Sham Chee Keat**  
RAMDAS & WONG  
Singapore

13.00 – 14.00

### ON-SITE LUNCH

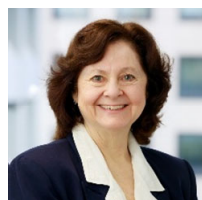
Traditional Japanese Bento Boxes will be provided for attendees during a networking lunch.

14.00 – 15.00

### NAVIGATING PROGRESS: WOMEN'S ADVANCEMENT IN JAPAN AMID SHIFTING GLOBAL PRESSURES

Japan's historic milestone, appointing its first female prime minister, signals meaningful progress for women's leadership. At the same time, Japanese companies are facing an unexpected challenge: the ripple effects of shifting DE&I attitudes in the U.S. This panel explores how Japan can continue advancing gender equity while navigating cross-border political dynamics, and what global businesses can do to safeguard progress rather than reverse it.

*\*Additional panelists to be confirmed.*



**Bonnie Dixon**  
*Host Firm*  
ATSUMI & SAKAI  
Tokyo, Japan



**Naomi Fudo**  
*Former President*  
VOLVO JAPAN  
Tokyo, Japan

15.00 – 15.15

**BREAK**

15.15 – 16.15

### **ASIA & AUSTRALASIA REGIONAL MEETING**

During this meeting, ALFAI attorney attendees will engage in strategic discussions focused on shaping the future direction of the group. Participants will identify and evaluate emerging opportunities within the Asia and Australasia region, including potential clients whose needs align with the expertise of member firms. By sharing insights and perspectives, attorneys can foster stronger relationships, enhance collective business development efforts, and create pathways for mutual growth. These conversations aim to reinforce the value of regional cooperation among ALFAI firms.

18.30 – 21.30

### **SUMIDA RIVER BOAT CRUISE DINNER**



Funasei Pier, Funasei Bldg.  
1-16-8 Kita Shinagawa

Enjoy a scenic cruise along Tokyo's Sumida River aboard a traditional Yakatabune, passing under unique bridges, and savoring an elegant dinner of sashimi, sushi, and tempura while taking in the city from the water.

**Transportation:** *The group will meet in the hotel lobby at 18.00 for a 20-minute coach transfer to the boat dock.*

**Attire:** *Casual attire is appropriate. Shoes will be removed when boarding. Please wear socks or stockings.*

FRIDAY, 15 MAY

6.00 – 10.30 AM

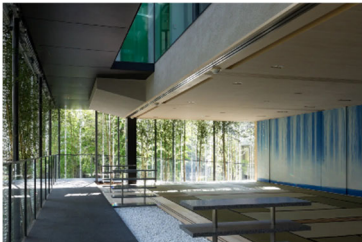
BREAKFAST AT LEISURE

Andaz Hotel

Breakfast at your leisure is included in your hotel room rate.

12.30 – 14:00

SAKE TASTING & LIGHT LUNCH AT EKO-IN TEMPLE IN RYOGOKU



Ryogoku is a historic district in Tokyo near Asakusa, known for its traditional atmosphere, cultural landmarks, and proximity to the sumo stadium. Asakusa offers classic Japanese street experiences. It is one of Tokyo's most popular sightseeing areas.

*Transportation:* The group will meet in the hotel lobby at 12.00 for a coach transfer to Eko-in.

*Attire:* Casual attire is appropriate. Shoes will be removed when entering the temple. Please make sure to wear appropriate socks or stockings.

TENTATIVE ACTIVITY: SUMO WRESTLING EVENT



14.00 – 14.30

TRANSFER TO SUMO STADIUM

14.30 – 18.00

SUMO WRESTLING EVENT

Experience Japan's national sport at the country's most famous and historic sumo arena. Explore the grounds before the event begins at 15.30. The matches will conclude by 18.00 PM. ***Please note, we are still securing tickets for this event and availability will be officially confirmed in the coming weeks.***

Attendees who do not attend the sumo event might prefer to spend the afternoon at the recently renovated [Edo Tokyo Museum](#) located immediately behind the sumo stadium and within a five-minute walk to our dinner location.

18.30 – 20.30

TRADITIONAL "CHANKONABE" SUMO WRESTLER DINNER



[Hananomai](#)

1-1-15 Kamezawa, Sumida-ku

This restaurant lets you savor the same hot-pot dish eaten by sumo wrestlers. Dig into a plentiful serving of protein and veggies and soak in the sumo-centric atmosphere complete with its own sumo ring.

*Transportation:* Five-minute walk from the sumo stadium. Buses will transport attendees back to the hotel after dinner.

*Attire:* Casual attire is appropriate. Shoes will be removed for dinner. Please make sure to wear appropriate socks or stockings.

### GENERAL INFORMATION

#### HOTEL LOCATION:

1-23-4 Toranomom  
Minato-ku, Tokyo 105-0001

#### MEETING LOCATION:

Hibiya Kokusai Bldg.  
2-2-3 Uchisaiwai-cho  
Chiyoda-ku, Tokyo 100-0011  
8th Floor, Elevator Bank C

#### REGISTRATION:

You must register yourself and secure hotel reservations through our [REGISTRATION LINK](#).  
ATTENDANCE IS OPEN ONLY TO MEMBERS OF ALFA INTERNATIONAL AND THEIR INVITED GUESTS AND IS LIMITED TO AGES 21+.

#### ATTIRE:

The attire for the meeting sessions on Thursday is business casual. The attire for the Wednesday, Thursday and Friday dinners is business or “smart” casual (nice jeans are appropriate). The recommended attire for the tours on Friday is casual. Jeans, comfortable shirts and walking shoes are encouraged. Socks or stockings should be worn as many meal locations will require removing shoes.

#### SPECIAL ACCOMMODATION

If you need any special accommodation, including a nursing room, special dietary meals, ADA access or other needs, please reach out to ALFA International staff in advance of the meeting. We will ensure that necessary accommodation is provided.

#### REGIONAL SEMINAR CONTACT:

Kacie Patterson  
[kpatterson@alfainternational.com](mailto:kpatterson@alfainternational.com)

#### LOCAL CONTACT:

Bonnie Dixon  
Cell Phone: +8190-4714-2114

#### COMMUNICATION ON SITE:

Please make sure to use the ALFAI Asia Group What’s App Account to communicate with attendees on site.

Stay connected with ALFA International:

