



ALFA International
THE GLOBAL LEGAL NETWORK



Sometimes the Third Time's a Charm Using Hindsight and Perseverance to Build Into the Future

**ALFA INTERNATIONAL 2022 CONSTRUCTION LAW SEMINAR
JULY 27-29, 2022 | RITZ-CARLTON, BACARA | SANTA BARBARA, CALIFORNIA**

www.ALFAInternational.com

**CONSTRUCTION LAW PRACTICE
GROUP LEADERSHIP**


Eddy Hayes
*Vice Chair, ALFA International
 Board of Directors*
 LEAKE & ANDERSSON, L.L.P.
 New Orleans, Louisiana



Grace Garcia
Chair
 MORRISON MAHONEY LLP
 Boston, Massachusetts



Robert deRosset
Vice Chair & Marketing Chair
 YOUNG MOORE AND
 HENDERSON P.A.
 Raleigh, North Carolina



Chris Mueller
Program Co-Chair
 TAYLOR DAY, P.A.
 Jacksonville, Florida



John Watt
Program Co-Chair
 BAKER STERCHI
 COWDEN & RICE LLC
 Kansas City, Missouri



Brett Marston
Chair Emeritus
 GENTRY LOCKE
 Roanoke, Virginia



Jonathan Lieb
2022 Seminar Track Leader
 MCDOWELL KNIGHT
 ROEDDER & SLEDGE, L.L.C.
 Mobile, Alabama



Nora Loftus
2022 Seminar Track Leader
 FRANTZ WARD LLP
 Cleveland, Ohio



David Stechow
2022 Seminar Track Leader
 PLUNKETT COONEY
 Bloomfield Hills, Michigan



Spencer Wiegard
2022 Seminar Track Leader
 GENTRY LOCKE
 Roanoke, Virginia



Patrick Wilson
2022 Seminar Track Leader
 WRIGHT LINDSEY JENNINGS
 Little Rock, Arkansas



David LeBas
Compendium Editor
 NAMAN HOWELL
 SMITH & LEE, PLLC
 Austin, Texas



Alfredo Alvarado
Course Book Editor
 LESTER SCHWAB KATZ
 & DWYER, LLP
 New York, New York



David Stechow
Course Book Editor
 PLUNKETT COONEY
 Bloomfield Hills, Michigan



Spencer Wiegard
Course Book Editor
 GENTRY LOCKE
 Roanoke, Virginia

Sometimes the Third Time's a Charm Using Hindsight and Perseverance to Build Into the Future

ALFA INTERNATIONAL 2022 CONSTRUCTION LAW SEMINAR

JULY 27-29, 2022

**RITZ-CARLTON, BACARA
 SANTA BARBARA, CALIFORNIA**

As they say, sometimes the third time is a charm. That can be true in sports, as a team seeks an elusive championship, in business, where a deal that historically got away is finally closed and in construction, where starting and stopping projects unfortunately became the norm for numerous reasons over the past two years. Which brings us here to the beautiful Ritz-Carlton, Bacara in Santa Barbara where we, construction industry counsel and colleagues, finally – after two postponements – can come together to enjoy each other's company and foster business relationships that may extend into the years ahead.

If the last two years has taught us anything, it is that hindsight and perseverance can benefit contractors and those in the industry to build better in the future. In early 2020, the industry was moving forward at almost breakneck speed, with tower cranes dotting skylines and infrastructure and construction projects possessing significant line items on government and corporate budgets. Currently, construction remains a significant economic driver, with demand remaining exceptionally high, though at times negatively impacted by ongoing COVID restrictions, workforce supply impacts and materials shortages and delays. Using a little hindsight, and the same perseverance that has thrust the construction industry forward through the last two years, we will tackle these issues and others confronting the industry.

The seminar includes plenary sessions with experts addressing how significant world events in recent years have impacted the construction industry internationally, how modular construction will shape the future of construction and litigating construction matters in a post-COVID world.

Beyond the plenary sessions, the seminar is divided into three tracks, separated chronologically, rather than by subject matter as in past seminars. Track 1 will be driven by discussions on what lessons construction industry counsel have learned in the past to better position their companies for future success. Track 2 will offer timely discussions of the impacting issues of today. And finally, Track 3 will provide a glimpse into the legal and risk topics that are expected to impact the future of the industry in the years ahead.

Whichever sessions you attend, we hope you find them to be timely, relevant and impactful to your company. Additionally, and perhaps more importantly, we hope you enjoy each other's company and foster business relationships that extend for time to come.



Chris Mueller
Program Co-Chair, 2022 Construction Seminar
 TAYLOR DAY, P.A.
 Jacksonville, Florida



John Watt
Program Co-Chair, 2022 Construction Seminar
 BAKER STERCHI COWDEN & RICE LLC
 Kansas City, Missouri

WELCOME TO THE RITZ-CARLTON, BACARA

Nestled on the bluff and beaches of the Gaviota coast between the Pacific Ocean and Santa Ynez Mountains, Ritz-Carlton, Bacara offers relaxed luxury and stunning natural beauty for an unforgettable getaway on California's Central Coast. Here, you can escape to the tranquility of two beaches, three infinity-edge pools and a state of the art spa, located along California's most spectacular stretch of Pacific paradise. Ritz-Carlton, Bacara is located 10 minutes or 6.7 miles from Santa Barbara Municipal Airport and two hours or 111 miles from Los Angeles International Airport. Travel by taxi/uber/lyft is suggested from the airport to the hotel.



WHAT IS ALFA INTERNATIONAL?

ALFA International is the premier network of independent law firms. Founded in 1980, ALFA International was the first and continues to be one of the largest and strongest legal networks. We have 140 member firms throughout the world. Our 80 U.S. firms represent 95 of the 100 largest metropolitan areas. Our 60 international firms are located throughout Europe, Asia, Australia/New Zealand, Africa, Canada, Mexico and South America.

ALFA International's mission is to provide high quality, cost efficient legal services wherever our clients need them. The ALFA International model enables our members to use their local expertise to deliver highly effective legal solutions, often drawing upon the collective wisdom and experience of other member firms. ALFA International clients benefit from a geographically comprehensive network of exceptional law firms and accomplished trial and business counsel. Our member firms meet high standards to be part of the ALFA International network and are well respected by their peers in the legal and business community.

2:00 p.m. – 5:30 p.m.
FACULTY REHEARSAL
Ballroom AB

2:00 p.m. – 6:00 p.m.
REGISTRATION
Ballroom Terrace

2:00 p.m. – 4:00 p.m.
**CLIENT ADVISORY
BOARD MEETING**
Salon 1




4:30 p.m. – 5:30 p.m.
The Wisest Wine
**WOMEN'S INITIATIVE TRIVIA &
WINE TASTING RECEPTION**
Ocean Terrace
Please join the Women's Initiative Practice Group and other female colleagues for a fun and engaging trivia event with a twist of wine and perhaps a tasting, too!
 **Nora Loftus**
Women's Initiative Liaison
FRANTZ WARD LLP
Cleveland, Ohio

5:30 p.m. – 6:30 p.m.
**TALK AMONGST YOURSELVES:
CLIENT ONLY SOCIAL**
Rotunda Balcony
This event allows client attendees the opportunity to exchange ideas and share best practices in a social setting without ALFA International lawyers present.

5:30 p.m. – 6:30 p.m.
ALFA INTERNATIONAL: ALL ATTORNEY MEETING
Screening Room
All attending ALFA International attorneys are required to attend.



6:30 p.m. – 9:30 p.m.
Welcome to Santa Barbara!
**WELCOME RECEPTION, BUFFET DINNER
& REGISTRATION**

The Bluff
Welcome to California's Central Coast! On the opening night of the seminar we welcome all attendees to join us on The Bluff for our Welcome Reception and Buffet Dinner. Reconnect with old friends and make new acquaintances as you take in breathtaking views from high above the Pacific Ocean.

Thursday, July 28

7:00 a.m. – 8:00 a.m.
BREAKFAST BUFFET
Ballroom Terrace and Lawn

8:00 a.m. – 1:00 p.m.
PROGRAM SESSIONS
Ballroom AB, Salon 1 & Salon 2

8:00 a.m. – 8:15 a.m.
Introductory Remarks



Eddy Hayes
*Vice Chair, ALFA International
Board of Directors*
LEAKE & ANDERSSON, L.L.P.
New Orleans, Louisiana



Chris Mueller
*Program Co-Chair, 2022
Construction Seminar*
TAYLOR DAY, P.A.
Jacksonville, Florida



Jessica Zaroski Bauer
Chief Executive Officer
ALFA INTERNATIONAL
Chicago, Illinois



Grace Garcia
*Chair, ALFA International
Construction Practice Group*
MORRISON MAHONEY LLP
Boston, Massachusetts



John Watt
*Program Co-Chair, 2022
Construction Seminar*
BAKER STERCHI
COWDEN & RICE LLC
Kansas City, Missouri

8:15 a.m. – 9:15 a.m.
PLENARY SESSION

A Look Back to the Future in Modular Construction

Modular construction takes prefabrication to a new level. Although it may seem like a new concept, it has been around for many years. 100 years ago, Sears was shipping two-story prefabricated homes in pieces that were then assembled together at the site. 50 years ago, commercial buildings were being constructed with units that were manufactured in plants and shipped to the project site. We are now seeing a resurgence in modular construction that takes a great idea from the past and moves it into the future. Labor shortages, weather risks and the ever increasing urgency to complete projects faster and cheaper has made modular construction an increasingly popular building delivery method. This session will focus on both the good and bad of modular construction, including the unique legal challenges that arise with this form of offsite construction.



Nora Loftus
Co-Moderator
FRANTZ WARD LLP
Cleveland, Ohio



Andrew Burns
Co-Moderator
COSGRAVE VERGEER
KESTER LLP
Portland, Oregon



Jon Beling
Associate General Counsel
CLAYTON HOMES
Maryville, Tennessee



Steve Lokus
Western Regional Vice President
THE NAVIGATORS
GROUP, INC.
Yanbury, Connecticut

9:15 a.m. – 9:30 a.m.

BREAK

9:30 a.m. – 10:30 a.m.

BREAKOUT SESSIONS – GROUP 1

TRACK ONE

All Aboard: How to Successfully Ride the Workers' Comp and OSHA Waves

In the construction industry, job site incidents resulting in employee injuries are unavoidable. From those that require simple medical treatment on site to OSHA's "Fatal Four," companies should have a plan in place for handling all types of work-related incidents. This panel will focus on best practices for handling incidents that lead to worker's compensation claims and OSHA investigations. There are many common pitfalls from incident investigation to conclusion, most of which are avoidable. Having standard operating procedures in place for properly documenting evidence through photographs, witness statements, written incident reports and the like, puts the employer in the best position to handle these situations. OSHA's investigators are experienced. In 2018 alone, OSHA conducted more than 70,000 federal and state plan inspections. There are specific questions OSHA investigators will want answered. Knowing and preparing on the front end of the investigation is paramount to proper handling of the investigation.



Bart Cannon
Moderator
HUIE, FERNAMBUCQ
& STEWART, LLP
Birmingham, Alabama



Javier Garza
Claims Manager
CEMEX
Houston, Texas



Donald McKay
LEAKE & ANDERSSON, L.L.P.
New Orleans, Louisiana

TRACK TWO

Government Contracting

The greater use of Design-Build and Indefinite Delivery/Indefinite Quantity (IDIQ) contracts are important developments in federal government contracting for construction. Learn about the latest trends in federal design-build contracting, which serves as the model for state and local government procurements, utilizing recently completed projects as representative examples of these developments in federal design build projects. Receive informative insights about the potential risks in federal design-build contracting faced by general contractors and corporate sureties who bond such projects, along with recommendations as how best to mitigate and manage those risks. Finally, IDIQ contracts account for approximately one-third of all federal contract obligations, with more than \$130 billion spent annually. Examine the single-award and multiple-award IDIQ contracts being utilized to obtain construction and engineering/design services by federal agencies, including contract issues and disputes unique to these types of contracts.



Ryan Sanders
Moderator
BUTT THORNTON
& BAEHR PC
Albuquerque, New Mexico



Maura Kelly
*Vice President Legal &
Associate General Counsel*
MCCARTHY BUILDING
COMPANIES, INC
Houston, Texas



Ira Sussman
Senior Claims Counsel
IAT-SURETY
Naperville, Illinois



Terry Salazar
QUILLING, SELANDER,
LOWNDS, WINSLETT
& MOSER, P.C.
Dallas, Texas

TRACK THREE

The Brave New World of Prevention Through Design

Traditionally, design professionals' contracts disclaim any duty for construction site safety and allocate that responsibility solely to the construction contractor. Proponents of a safety initiative called Prevention through Design (PtD) are advocating for a change in these traditional roles. They contend that design professionals should expressly consider the safety of construction workers (and others) when designing projects. While all can agree that safety of workers is of paramount importance, our panelists will discuss the risks, rewards, and potential for unintended consequences not only for design firms who adopt PtD principles, but also for other participants in the design and construction process.



Joe Carini
Moderator
JOHNSON &
BELL, LTD.
Chicago, Illinois



Doug Cole
*Vice President,
General Counsel*
ECS GROUP
Chantilly, Virginia



Guy Hollingsworth
Claims Manager
HANVOER
INSURANCE GROUP
Itasca, Illinois



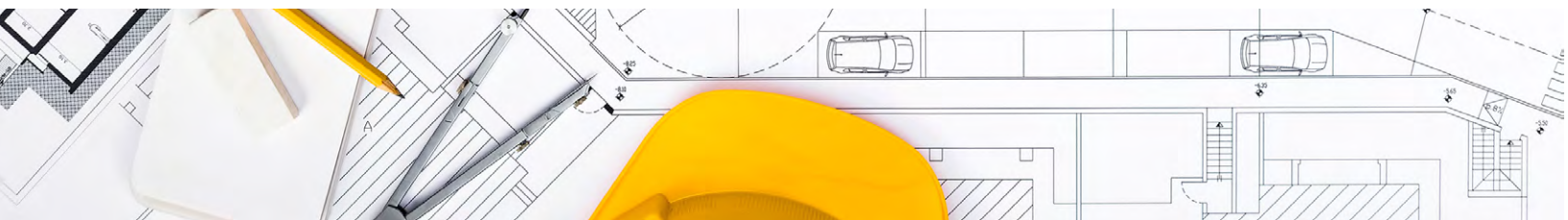
E. Tyron Brown
HAWKINS PARNELL
& YOUNG, LLP
Atlanta, Georgia



Alichia Grubb
GENTRY LOCKE
Roanoke, Virginia

10:30 a.m. – 10:45 a.m.

BREAK



10:45 a.m. – 11:45 a.m.

BREAKOUT SESSIONS – GROUP 2

TRACK ONE

Navigation of Complex and Multi-Party Claims: Best Practices, Lessons & Strategies

Multi-party and complex construction claims can be difficult to navigate, particularly through the early stages of litigation. This panel will focus on past experiences and best practices on how to properly wade through the challenges of complex claims, implement procedural and substantive strategies that may mitigate discovery issues, and streamline the "life" of the litigation. Particular discussion and topics include pre-suit/claims agenda, joint defense agreements, case management orders, use of special masters, e-discovery, ESI, confidentiality agreements, discovery's influence on early settlement considerations and governmental/ political influence.



Ryan Casteix
Moderator
LEAKE & ANDERSSON, L.L.P.
New Orleans, Louisiana



Michael Bauer
Deputy General Counsel
WSP
Atlanta, Georgia



Andrew Dopheide
Associate Counsel
BURNS & MCDONNELL
Kansas City, Missouri



Gibby Wright
MCCANDLISH HOLTON PC
Richmond, Virginia

TRACK TWO

Did I Do That? Liability to Adjoining Landowners

Project collapse, damage to shared walls, decreased lateral support and improper stock-piling are just some of the many ways owners, contractors, construction managers, engineers and even architects may be liable to adjacent landowners or their tenants. Avoiding these issues can be particularly difficult when areas of older cities are undergoing revitalization and/or projects are otherwise amid dense population centers. The panel intends to provide an overview of best practices/lessons learned along with a discussion of relevant coverage issues and emerging trends.



Eric Leppo
Moderator
SEMMESE, BOWEN &
SEMMESE
Baltimore, Maryland



Scott Hillman
General Counsel
KLEINFELDER
Parsippany, New Jersey



Jason Judovin
Executive Claims Specialist
MUNICH REINSURANCE
AMERICA, INC.
Glen Allen, Virginia



Jon Lieb
MCDOWELL KNIGHT
ROEDDER & SLEDGE, L.L.C.
Mobile, Alabama

TRACK THREE

Drone Use Liability and Coverage

Drones have become a necessary part of most construction projects. Drones can monitor work conditions, quality issues and document progress, but what about all of the other information that drones capture that may violate the right of privacy for neighboring property and people captured on the drone footage? This panel will look at the privacy issues involved with drone usage and will discuss the insurance coverage that may, or may not, be available for any alleged claims.



David Stechow
Moderator
PLUNKETT COONEY
Detroit, Michigan



George Netschke
*Vice President &
General Counsel*
BARTON MALOW
Southfield, Michigan



Don Kiesling
Associate General Counsel
MICHELS CORPORATION
Brownsville, Wisconsin

11:45 p.m. – 12:00 p.m.

BREAK

12:00 p.m. – 12:10 p.m.

ALFA International Headquarters Update



Jessica Zaroski Bauer
Chief Executive Officer
ALFA INTERNATIONAL
Chicago, Illinois



Spencer Wiegard
Moderator
GENTRY LOCKE
Roanoke, Virginia



David Royer
In-House Counsel
X ENERGY, LLC.
Rockville, Maryland



Lori-Ann Russo-Green
Complex Claims Manager
GRAMERCY RISK
MANAGEMENT, LLC
Uniondale, New York



Angela Bajramaj
Corporate Counsel
BELFOR USA GROUP, INC.
Birmingham, Michigan



Cassidy Starkey
SVP & Director of Claims
LOCKTON COMPANIES
Philadelphia, Pennsylvania



Alfredo Alvarado
LESTER SCHWAB KATZ
& DWYER, LLP
New York, New York

12:10 p.m. – 1:00 p.m.

PLENARY SESSION

Litigation and Dispute Resolution in a Post-COVID World

Since the beginning of the COVID-19 pandemic in early 2020, in-person gatherings have been limited or eliminated. To "flatten the curve," social distancing measures were adopted across the world, with those who are able to work from home using virtual meeting spaces to conduct business meetings and conferences. Facing executive orders and rules limiting in-person gatherings and mandating social distancing, courts and neutrals have moved to virtual hearings, trials, and mediations. This panel will discuss the current state of virtual litigation, arbitration, and mediation, the efforts to resume in person jury trials and court proceedings, and how the recent move to the virtual space may change litigation and ADR practice after the pandemic ends.

1:00 p.m. – 2:00 p.m.

BUFFET LUNCH

Ballroom Terrace and Lawn

2:00 p.m. – 6:00 p.m.

Afternoon Poolside Cabanas

Lower Poolside Cabanas 1-5

Spend the afternoon in the shade of the ALFA International private cabanas while overlooking the ocean and connecting with colleagues. Sip regional wines, splash in the water or simply take in the beautiful surroundings as you unwind from the day's educational programs and prepare for the evening's festivities.

No registration is necessary for this afternoon's event.

Suggested Attire: Swim attire, sunglasses and sunscreen.

7:00 p.m. – 10:00 p.m.

Relax and "Un-Wine"

COCKTAIL RECEPTION & BUFFET DINNER

Ocean Lawn

Take in the dramatic panoramic views and the resort's lush landscaping from the Ritz-Carlton, Bacara's Ocean Lawn. Enjoy the salty sea air, live music and colorful décor as you relax and enjoy cocktails and a buffet dinner in this idyllic setting.



Friday, July 29

8:00 a.m. – 9:00 a.m.

BREAKFAST BUFFET

Ballroom Terrace and Lawn

9:00 a.m. – 12:30 p.m.

PROGRAM SESSIONS

Ballroom AB, Salon 1 & Salon 2

9:00 a.m. – 10:00 a.m.

BREAKOUT SESSIONS – GROUP 3

TRACK ONE

Aging Infrastructure: Examining the Challenges and Opportunities for Improvement

This panel will focus on the real-life challenges of the aging infrastructure including roads and bridges, underground utilities and the electrical grid. The recent federal legislation on Infrastructure funding will be examined, along with the challenges of keeping infrastructure safe and functional and prioritizing maintenance, repair and replacement. This panel will provide insight on the legal, financial, construction and practical elements of dealing with an aged and aging infrastructure, and how the recent legislation is likely to impact the construction industry across the nation.



Brett Marston
Moderator
GENTRY LOCKE
Roanoke, Virginia



Cody Webb
VP and General Counsel
ZACHRY CONSTRUCTION
CORPORATION
San Antonio, Texas



Mark Van De Voorde
Chief Legal and
Administrative Officer
VICTAULIC COMPANY
Easton, Pennsylvania



Jeremy Ward
FRANDEN | FARRIS |
WUILLING | GOODNIGHT |
ROBERTS + WARD
Tulsa, Oklahoma

TRACK TWO

What's Worse, COVID-19 or its Aftermath? Force Majeure and Disputes Pre-and Post-COVID

During the COVID-19 pandemic, the concept of force majeure, and specifically the applicability of force majeure clauses, was the hot topic in construction and legal circles. This presentation will analyze whether force majeure was at the center of disputes, and particularly where such clauses do not result in additional compensation. Equally if not more problematic for contractors has been dealing with lost productivity costs due to COVID-19 protocols such as social distancing of workers which slows the work. Disputes have also arisen over whether the contractor has the ability to terminate the prime contract due to COVID-19 shutdowns. In the meantime, contractors have continued to deal with a shortage of labor, and in particular skilled labor. This presentation will analyze the multitude of COVID-19 problems for contractors and owners, including whether the fall-out from COVID-19 is fully realized and whether the aftermath may prove a breeding ground for even more disputes, especially given that inflation will bring continued costs escalation, when costs escalation has already been at an all-time high for the past years.



Kirsten Worley
Moderator
HIGGS FLETCHER
& MACK, LLP
San Diego, California



Todd Blischke
General Counsel
BALLARD MARINE
CONSTRUCTION
Portland, Oregon



Gregory Dukellis
Chief Legal Officer and
Executive Vice President
SHIMMICK CONSTRUCTION
COMPANY, INC.
Irvine, California



Adam Cooke
FOWLER WHITE BURNETT P.A.
Fort Lauderdale, Florida

TRACK THREE

Addressing Risk in a Changing Environment – OCIP's, CCIP's and Beyond

Insurance and bonding can be a life line when things go wrong on a project. Beyond the typical CGL and E&O programs, larger, more-complex projects call for new and innovative products to ensure successful project completion. This panel of experienced insurance and surety professionals will discuss the benefits and factors to be aware of with new products, as well as future trends in the industry.



Marc Sanchez
Moderator
FRANTZ WARD LLP
Cleveland, Ohio



Jennifer Franklin
Complex Liability
Director
AMERICAN FAMILY
INSURANCE CLAIMS
SERVICES
Jacksonville, Florida



David Kotnik
Surety Claims Leader
WESTFIELD
INSURANCE
Westfield Center, Ohio



Kevin McGrath
Vice President,
Professional Services
RISK STRATEGIES
COMPANY
New York, New York



Reed Grimm
TAYLOR DAY, P.A.
Jacksonville, Florida

10:00 a.m. – 10:15 a.m.

BREAK

10:15 a.m. – 11:15 a.m.

BREAKOUT SESSIONS – GROUP 4**TRACK ONE****The New Normal: Facing the Challenges of Today's Labor Market**

The past year has challenged employers on many fronts. Many companies have had to adjust to a remote environment, while others who do not have that option have had to keep their workforce safe and productive in a socially distant world. As operations resume, companies have had to deal with replacing employees who moved on after being furloughed and accommodating employees whose home lives have been disrupted by remote schooling and other changes brought about by the pandemic. What will tomorrow look like? What are we looking to restore, what will be new, and what is best left in the past? Join our panelists for a discussion of how they are rising to the occasion and succeeding in today's employment climate, as well as the current legal issues surrounding the labor market.



Robert C. deRosset
 Moderator
 YOUNG MOORE AND
 HENDERSON, P.A.
 Raleigh, North Carolina



Brian Raymore
 Senior Vice President
 of Safety & Risk
 CENTIMARK CORPORATION
 Canonsburg, Pennsylvania



Chet McPhatter
 Chief Operating Officer
 BANKER STEEL COMPANY, LLC
 Lynchburg, Virginia



Tamara K. Nelson
 MERRICK, HOFSTEDT
 & LINDSEY P.S.
 Seattle, Washington

TRACK TWO**Get Smart! A Study Guide on 'Smart Construction' Concepts, Trends and Risks**

"Smart Construction" starts early on a project, using digital design technologies and industrialized manufacturing techniques to (hopefully) improve productivity, minimize cost, enhance sustainability, and maximize user benefits. Everything else around us has become "smarter," so why not structures? From phones to appliances, we are surrounded by technology that helps us work faster and more accurately, and for less money. Despite all the obvious advantages, however, new risks and hazards of all types arise from the implementation of Smart Construction efforts. In this lively, fast-paced discussion, our panel will discuss Smart Construction trends and risks, exploring ideas to protect design, construction and insurance professionals from the inevitable pitfalls. We may even test your "smarts" with a final exam – will you be ready?



Benton Barton
 Moderator
 HALL & EVANS, LLC
 Denver, Colorado



Ray Alletto
 Director, Risk Management
 THE BECK GROUP
 Dallas, Texas



Erin Austin
 Senior Vice President, Assistant
 Secretary and General Counsel
 DAVID EVANS AND
 ASSOCIATES, INC.
 Portland, Oregon



Rochanne Keane
 Claims Product Specialist -
 Professions
 BEAZLEY
 San Francisco, California

TRACK THREE**One of These Things is Not Like the Others**

In the typical construction defect litigation, everyone with any connection to the project is usually brought into the litigation. But is that always a good strategy? In many cases, bringing contractors, design professionals and product manufacturers into an adversarial relationship can have unintended consequences. For the attorneys and risk managers representing contractors, thoughtful consideration should be given whether to seek risk-shifting opportunities. If the Owner's attorney throws everyone into the mix, developing a defense strategy needs to recognize the tension between the theories and interests of the defendant groups. In this discussion, we will discuss the opportunities and pitfalls of litigation strategies and risk mitigation in this hybrid context.



Rett Kendall
 Moderator
 MURPHY & GRANTLAND, P.A.
 Columbia, South Carolina

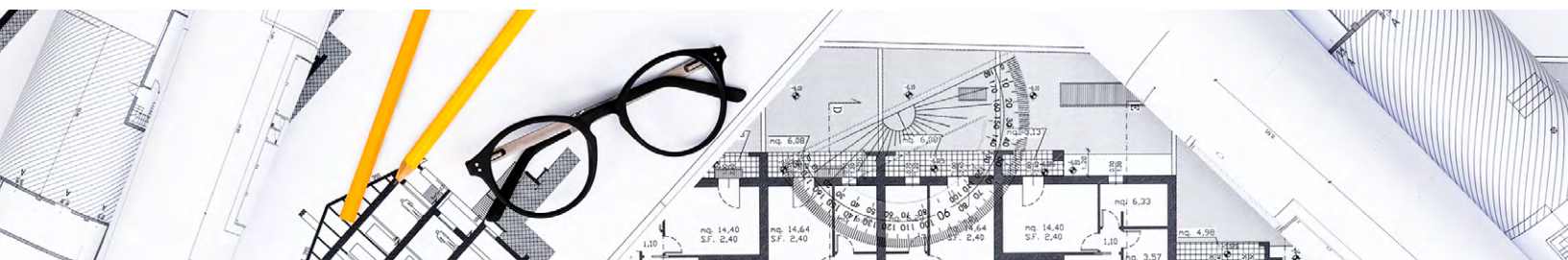


Matt Piwonka
 Legal Counsel-Risk
 INSTALLED BUILDING
 PRODUCTS
 Columbus, Ohio



Grace Garcia
 MORRISON MAHONEY LLP
 Boston, Massachusetts

11:15 a.m. – 11:30 a.m.

BREAK

Friday, July 29

11:30 a.m. – 12:25 p.m.

PLENARY SESSION

Not in the Playbook: Navigating Supply Chain Disruption and Price Volatility in Construction

The ready availability of raw materials and manufactured goods at relatively predictable prices is critical to construction project delivery. Whether by pandemic, inflation, war or increased competition for a finite supply, scarcity of materials and price volatility can place projects at immediate risk, or they may even cause project abandonment altogether. This panel of domestic and international speakers will address the causes of supply chain disruption and material price volatility and how construction industry participants are managing these issues in very rough seas.



David Draper
 Moderator
 LEWIS THOMASON
 Knoxville, Tennessee



John Thompson
 Director of Global
 Business Systems
 MUNTERS CORPORATION
 Amesbury, Massachusetts



Pijan Wu
 LCS & PARTNERS
 Taipei, Taiwan



Johannes Bickel
 Co-Moderator
 TIEFENBACHER
 Heidelberg, Germany



Brent Zimmerman
 Chief Legal Officer and
 Assistant Secretary
 MILLER ELECTRIC COMPANY
 Jacksonville, Florida

12:25 p.m. – 12:30 p.m.

Closing Remarks

12:30 p.m. – 1:30 p.m.

BUFFET LUNCH

Ballroom Terrace and Lawn

1:30 p.m. – 5:30 p.m.

OPTIONAL ACTIVITIES

See Optional Activities Brochure

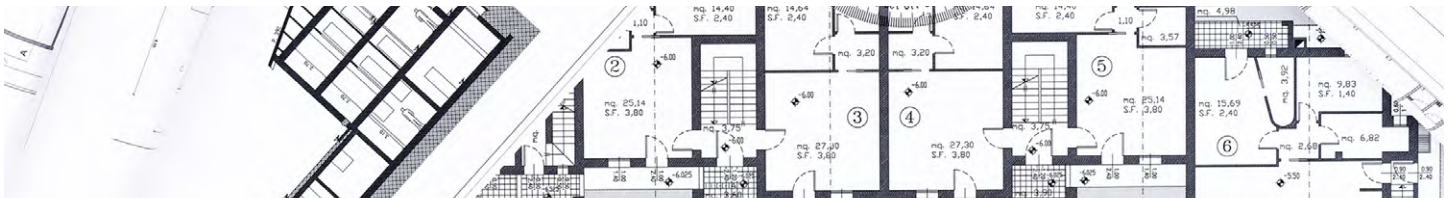
Advance registration is required.

7:00 p.m. – 10:00 p.m.

Off-Site Farewell Cocktails & Dinner

See Optional Activities Brochure

Advance registration is required.



2022 Construction Bios

RAYMOND J. ALLETO, ARM, CRIS has engaged in the practice of risk management for more than thirty-five years, currently serving as Director, Risk Management for The Beck Group in Dallas, Texas. Mr. Alletto is also Managing Principal of Alletto Risk Consulting, LLC, a firm he established upon retiring as Vice President at United Rentals, Inc. in 2017. His consulting practice has spanned multiple industries and functions related to risk, claims and insurance. As an officer of a publicly traded equipment rental company, he was responsible for claims and litigation management; property and casualty insurance; risk finance; corporate security; records management; environmental, health and safety (EHS); and, early on, led the Employee Benefits team. Mr. Alletto's career has spanned the construction, manufacturing, telecommunications, and pharmaceutical industries, for small and large, public and privately held companies, all with worldwide exposures. He has consulted with various companies, focusing on merger/acquisition due diligence and integration, insurance, claims, alternative risk financing and risk management information systems. He has particular expertise in litigation and claims management. He holds the Construction Risk Insurance Specialist designation (CRIS), and the Associate in Risk Management (ARM) designation. Mr. Alletto has been an active member of RIMS over the years, serving on numerous committees at the national level. He was a member and chairman of the Manufacturers'

Alliance Risk Management Council for more than 20 years and served on various industry advisory boards and the editorial board of Risk Management Magazine. In 2009, Mr. Alletto was named to the Risk Management Honor Roll by Business Insurance magazine. He has been an active member of the Client Advisory Board for the American Law Firm Association (ALFA International), and a frequent speaker at their conferences and seminars.

ALFREDO ALVARADO is a Partner at the ALFA International Member firm Lester Schwab Katz & Dwyer, LLP in the firm's New York City office. His practice concentrates on complex cases, products liability, professional liability, construction/labor law cases, general liability, and motor carrier and automobile liability. He has 26 years of extensive experience in the representation of companies and individuals in high exposure cases in both State and Federal Courts in both New York and New Jersey. Mr. Alvarado has lectured extensively on trial preparation, defending traumatic brain injury cases, Frye and Daubert standards in New York, role of excess monitoring counsel, defending Labor Law Claims and jury selection. Mr. Alvarado is a 1987 graduate from Tulane University where he received a Bachelor of Arts Degree with Honors, and a 1990 graduate of the Tulane University Law School where he received Order of the Barristers Award for his skills in oral

advocacy. Mr. Alvarado has been selected for inclusion in the 2012, 2013, 2014, 2015, 2016, 2017, 2018, 2019, and 2020 New York Super Lawyers.

ERIN F. AUSTIN is a Senior Vice President, Assistant Secretary and General Counsel for David Evans and Associates, Inc. (DEA), and its affiliated professional staffing company subsidiaries. DEA is a civil engineering and surveying company of over 800 employees providing consulting services for transportation, land development, energy, and water/natural resource clients. She is responsible for the various companies' insurance programs, claims and litigation, ethics and compliance programs and other general legal matters. Erin has been with DEA for 25 years and located in the company's Portland office. Erin has a master's degree in psychology and earned her law degree at the Northwestern School of Law at Lewis and Clark College while working full-time. Erin is the current chair of the American Council of Engineering Companies' (ACEC) national risk management committee and served a four-year appointment on the Board of Oregon State Board of Examiners for Engineering and Land Survey (OSBEELS), which concluded this past June.

ANGELA BAJRAMAJ is Corporate Counsel at BELFOR Property Restoration, the world's largest disaster recovery contractor, where she specializes in litigation and dispute resolution. Angela focuses her practice on negotiating cost-effective

solutions to complex commercial payment disputes, resolving licensing and regulatory complaints across the U.S., and overseeing defense of defect claims, subcontractor disputes, and contract disputes. In addition to being an attorney, Angela is a licensed builder with over 20 years' experience working as a general contractor. This hands-on experience has given Angela the industry knowledge and skills needed to resolve construction disputes effectively and efficiently. Outside of work, Angela is an outdoor enthusiast who loves biking, hiking, and cross-country skiing.

BENTON BARTON is a trial lawyer who leads the Construction & Design Practice Group at Hall & Evans, the ALFA International firm in Denver, Colorado. In his busy practice, he regularly defends designers, contractors and environmental consultants in high-exposure lawsuits and arbitrations. After earning his law degree at the University of Texas, over his 29-year career Benton has led teams working on matters of the utmost complexity involving landmark projects of all types, and on project challenges and accidents which have attracted national publicity. Benton has been repeatedly honored as a Colorado Super Lawyer for his defense of professional liability and construction claims, and also recognized by Best Lawyers for his expertise in three disciplines: Construction Law, Construction Litigation, and Arbitration. For the past twelve years, in addition to maintaining his advocacy practice, Benton has served on the AAA's National Panel of Construction Arbitrators, retained to help resolve more than 50 complex design and construction disputes. Benton is past chair of the ALFA International Construction Practice Group, served on ALFA's Board, and he regularly presents substantive (and hopefully entertaining!) discussions on design, construction, environmental and insurance topics nationwide.

MICHAEL BAUER is a Vice President and Deputy General Counsel for WSP in Atlanta, Georgia. In his current role, he focuses primarily on government contracts and handles some of the company's US-based litigation. Prior to joining WSP, he was a Senior Legal Counsel for Golder Associates (which was acquired by WSP). Prior to joining Golder, Michael served as a Region Legal Counsel at AECOM (via its acquisition of URS) and as a litigation attorney at Seyfarth Shaw and Watt, Tieder, Hoffer & Fitzgerald during his time in private practice. Michael has extensive experience with complex construction litigation and during his career has worked on cases ranging from pipeline pulls under the Tigris River in Iraq to domestic litigation involving multimillion-dollar condominium projects. Michael received his undergraduate degree from Georgetown University's School of Foreign Service and his J.D. from the Washington and Lee University School of Law.

JESSICA ZAROSKI BAUER joined ALFA International (ALFAI) in 2004 as a Coordinator of Events & Member Services. She then worked for

several years as a Marketing Manager, Chief Events Officer and Chief Operating Officer. After 17 years with the association, she accepted her current role as Chief Executive Officer. In this position she is the strategic thought leader of the organization, working closely with the Board of Directors and the various ALFAI committees. She manages headquarters staff and maintains constant communication with association members. Jessica oversees the member recruitment, development and retention programs as well as the marketing and business development initiatives for the organization. Prior to joining ALFA International, she worked in the marketing department of the Chicago-based law firm of Gardner, Carton & Douglas, LLP (now Faegre Drinker Biddle & Reath). She is a graduate of the University of Iowa Tippie College of Business (Go Hawkeyes!) and is an avid college football fan. In her spare time Jessica can be found enjoying family time with her husband Harry and her two young daughters, Greta and Vivian.

JON BELING serves as Associate General Counsel for Clayton Homes and its subsidiaries. As part of the Company's litigation team, he is responsible for managing the Company's disputes and litigation throughout the United States. Prior to joining Clayton Homes, he was in private practice at Simpson McMahan, Glick & Burford, PLLC, in Birmingham, Alabama, defending modular and manufactured homes, manufacturers and retailers in connection with consumer litigation. He is experienced in defending claims in various forums, including arbitration, state and federal courts throughout the country and he has argued before the Eleventh and Tenth Circuit Court of Appeals.

JOHANNES BICKEL is practicing real estate and construction law in the Heidelberg offices of Tiefenbacher, the ALFA International member firm in Germany. As a certified specialist in construction law and as a partner of the firm he is leading the firm's construction law group, which has a broad range of national and international clients from industries, midsize firms and family offices as well. Johannes concentrates his work in drafting contracts and project-accompanying consulting regarding construction projects like power plants, photovoltaic plants, football stadiums, truck toll posts on federal roads in Germany and buildings. The practice comprises contracts and project support for real estate acquisitions as well as litigation and arbitration strategy in construction law court cases. Johannes earned a doctor's degree at the Heidelberg University and spent time at the universities of Munich and Austin, Texas.

E. TYRON BROWN is a Partner at Hawkins Parnell & Young LLP, the ALFA International member firm in Atlanta, Georgia. He has extensive litigation, arbitration and other dispute resolution experience in complex business, construction and professional liability cases including construction design and defect claims against property owners, developers, contractors, architects, engineers and construction

managers, contract disputes, directors and officers liability, business torts, unfair trade practices, business fraud, civil RICO and other professional liability claims. Ty has successfully represented some of the most recognizable Fortune 500 companies in these areas of law. For 2015 - 2018, Ty was selected for inclusion in The Best Lawyers of America in the field of Construction Law. He is a member of the ALFA International Construction Practice Group and serves on the Boards of Directors of the Litigation Section and the Construction Law Section of the Atlanta Bar Association. He was awarded the 2006 Attorney of the Year by the Judicial Council of the Gate City Bar Association. He is a past Vice-President of the Gate City Bar Association and a member of the American Bar Association and the National Bar Association. He served as Co-Chair of the Fundraising and Sponsorship Committee for the NBA Atlanta 2007 Convention. Ty received a B.S. in Political Science and his J.D. from Florida State University, where he served as Student Body President.

ANDREW T. BURNS is a Partner at the ALFA International member firm in Portland, Oregon, Cosgrave Vergeer Kester LLP. He is the Chair of the firm's construction practice group and a former managing partner of the firm. His practice focuses on providing advice and counsel to contractors, developers, architects and engineers, litigation construction defect disputes and construction related professional negligence claims. He also has significant experience in defending personal injury, products liability, environmental and premises liability litigation. He frequently speaks and writes on all aspects of construction-from contract formation and bid process to construction disputes, liens and post construction defect and professional negligence claims.

BART CANNON joined Huie, Fernambucq & Stewart, the ALFA International member firm in Birmingham, AL, in 2009, where he concentrates his practice in the areas of product liability, transportation, construction, class action/complex litigation, appellate issues and e-discovery. Bart regularly represents product manufacturers and Tier 1 suppliers, federal motor carriers, contractors, design professionals, building materials suppliers and heavy equipment distributors. Bart earned his BA from The University of Georgia and his JD from Mississippi College School of Law.

JOSEPH B. CARINI, III, is co-chair of Johnson & Bell's Construction group. He concentrates his practice in construction litigation and general negligence. He has extensive experience defending owners, project managers, general contractors, architects, engineers and subcontractors in construction litigation involving personal injury accidents and construction defect and design disputes. He also defends contractors and municipalities in litigation involving accidents arising out of highway construction, signage and signal maintenance. Mr. Carini serves as an

emergency on-site presence for catastrophic accident investigations. He also conducts risk management seminars for managers and workers, addresses insurance coverage issues and provides contract review services. Johnson & Bell is the ALFA International member firm in Chicago, IL.

RYAN CASTEIX is a partner with the ALFA International member firm of Leake & Andersson, LLP in New Orleans, Louisiana. His practice primarily focuses on construction litigation, specifically including construction defect, design professional liability, contract negotiation, licensing, collections and lien claims. In addition, his practice includes commercial litigation and premise liability defense. Ryan was named to the 2021 New Orleans Magazine Top Lawyers List in Construction Law and has been recognized as a Rising Star in the field of Construction Litigation by Louisiana Super Lawyers (2016-2018). Ryan received his B.A. from the University of Georgia and his J.D. from Tulane University.

DOUG COLE has served as General Counsel for the ECS Group of Companies, headquartered in Chantilly, Virginia, for over 19 years. ECS provides geotechnical engineer, construction materials testing, and environmental and facilities consulting services to members of the development and construction community. As head of the ECS legal department, he is responsible for overseeing the legal affairs of ECS, which includes risk management and insurance claims, litigation management, M&A, intellectual property rights, corporate regulatory compliance, employment and labor matters, commercial and government contracts, and corporate policy matter. Prior to joining ECS, Mr. Cole managed the litigation department of a Northern Virginia firm. Other experience includes a Palo Alto-based law firm working on IT, public contracting and sensitive acquisitions requiring CFIUS review, working in-house for a Fortune 10 IT provider conducting contract review and management for federal, state and local contracts, and contract review and administrative claims and bid protest litigation for a Joint Services Activity in the Department of Defense. Mr. Cole has provided training for the Army and Air Force, as well legal associations, businesses groups, and insurance organizations in commercial and government contracting, risk management, computer law, and intellectual property acquisition. Professionally, he is active in the Association of Corporate Counsel and the GBA Legal Affairs Committee. He is also a member of the ABA, DRI, the National Contract Management Association, and the Virginia State Bar Construction Law and Public Contracts Section.

ADAM COOKE is a Shareholder at the ALFA International member firm, Fowler White Burnett, P.A. in the Fort Lauderdale office. He is active in the firm's Aviation and Maritime practice groups. He has a background in different areas of Maritime & Admiralty including: maritime lien claims, commercial yacht disputes, ship mortgage

foreclosure, cargo claims, collision claims, salvage claims, limitation of liability claims, and Jones Act personal injury actions. He also has experience in insurance defense work, construction litigation, complex commercial litigation and has represented various lenders in litigation and collection matters. Additionally, Adam's practice includes representation of domestic and international airlines related to claims and litigation for property damage, personal injury, and cargo claims.

ROBERT DEROSSET serves clients primarily in the fields of construction, business and product liability law. He tries cases at the state and federal level in North and South Carolina. He is certified by the North Carolina Dispute Resolution Commission to conduct mediated settlement conferences in Superior Court cases and uses his perspective as a seasoned litigator to assist parties to voluntarily resolve their disputes through mediation. Robert has also completed collaborative law training and advanced collaborative law training and he is part of the effort in North Carolina to expand collaborative law into construction and business law. He is an active member of the construction and products liability and complex torts practice groups of ALFA International. He is recognized in North Carolina Super Lawyers (2019, 2020) in the area of Construction Litigation and holds an AV rating from Martindale-Hubbell. Prior to joining Young Moore in 2001, Robert practiced law for two years in Columbia, South Carolina and served as a United States Peace Corps Volunteer in León, Nicaragua. He uses the Spanish language skills he gained in Nicaragua to better serve clients of Young Moore and to effectively mediate cases involving parties whose primary language is Spanish. When he is not working for his clients, Robert enjoys trail running, or running on the streets and greenways of Raleigh. He is a marathoner and novice ultra-marathoner who has not yet run one too many races. He is a fan of the Raleigh area, as well as North Carolina in general and enjoys showing visitors what the region has to offer.

ANDY DOPHEIDE is Associate Counsel at Burns & McDonnell, an integrated construction and design services firm based in Kansas City, Missouri. At Burns & McDonnell his practice focuses on claims avoidance, dispute resolution, and general risk management. Prior to joining Burns & McDonnell, Andy served as Vice President and Assistant General Counsel with URS/AECOM and as a staff attorney for HDR. Andy received his B.A. from the University of Notre Dame, his J.D. from Creighton University, and his M.B.A from the University of Nebraska Omaha.

DAVID DRAPER is a long-time ALFA International Construction Practice Group and Steering Committee member, and the senior construction lawyer in the Knoxville, Tennessee office of ALFA International member firm, Lewis Thomason. He is an AV-rated lawyer with broad experience assisting clients with project related contract negotiations and construction related trial work in both court

and arbitration. His practice is concentrated design professional liability defense, construction defect and construction related insurance coverage disputes. His clients include owners, designers, industrial, commercial, utility and residential general contractors, subcontractors and suppliers. He has mediated, arbitrated or tried claims involving design error, material and equipment defects, changed conditions, defective workmanship, construction site personal injury, payment disputes and delay. He also handles OSHA enforcement cases, having previously obtained an OSHA 10-hour certification. He is a Tennessee Supreme Rule 31 listed Civil Mediator. Away from work, he enjoys time with his wife, Sherry, playing guitar, fishing and spending time in the highlands of Southern Appalachia.

GREGORY DUKELLIS is Chief Legal Officer and Executive Vice President for Shimmick Construction Company, Inc. Greg previously served as General Counsel for AECOM's Civil Construction Group, that included Shimmick and the legacy construction operations from Morrison Knudsen, Washington Group International and others, all of which are now part of Shimmick. Prior to joining Shimmick, Greg was a senior partner with a national construction law firm and served on its board of directors. Greg's extensive experience in all aspects of infrastructure allows him to provide the highest level of strategic, legal and risk management advice on the myriad of complex issues a major public works contractor encounters and must anticipate. In private practice, Greg was on the A.A.A. construction arbitration panel, and was ranked by Chambers USA as a leading construction attorney annually from 2009-2016. Greg is known for "extensive expertise in public works projects in California," and has significant experience advising on all aspects of public infrastructure, including Design-Build, P3, claims management, contractual risk assessment, resolution of claims, corporate governance and complex M&A transactions.

JENNIFER FRANKLIN is the Complex Liability Director at American Family Insurance Claims Services located in Jacksonville, FL. She has twenty-eight years of experience in the Property and Casualty industry, including rating and underwriting for CGL and Bop programs, Surety and Fidelity Bonds, and extensive experience in claims investigations, complex claims, reinsurance, and claims handling and management of losses throughout the United States. In her current role, she is responsible for the claims handling, and oversight of all complex liability claims and construction defect claims at AFICS. Jennifer has 9 teams that report to her that specialize in the handling of these claims. Prior to her role as a Director at AFICS, she was the Director of Construction Defect claims at Main Street America Group. In this role, she was intricately involved in developing a strategic plan to streamline the handling of these complex CD cases and working with the product teams to develop state strategies. Other roles included field unit manager responsible

for all third-party claims in Florida, Georgia, Arizona and Nevada, and a Corporate Consultant for the Southeast. She received her bachelor's degree in Business Management from the University of Phoenix and holds the SCLA designation. She was a Circle of Excellence winner in 2009 and has presented as a panelist on construction defect both at a national and international level.

GRACE V.B. GARCIA, a Partner in the Boston office of the ALFA International member firm, Morrison Mahoney LLP, concentrates her practice in the areas of product liability, construction law-including personal injury, construction defect, and contractual-OSHA, commercial litigation, employment litigation, premises liability, and Americans with Disabilities Act (ADA) cases. Grace is a former member of the ALFA International Board of Directors, is Chair of the Construction Practice Group, and is the former Chair of the Women's Initiative Practice Group. Grace has an AV Preeminent Rating from Martindale Hubbell and in 2013, and was honored by Massachusetts Lawyers Weekly as a "Top Women of Law." Grace has 20 years of trial practice and litigation experience, and has obtained successful outcomes on behalf of her clients in both state and Federal Court trials. She also has successfully argued before the Appeals Court in *North American Specialty Ins. Co. v. Payton Construction Corp.*, 80 Mass. App. Ct. 367 (2011). Beyond ALFA, she is actively involved in many professional groups, and is Past President of the Massachusetts Defense Lawyers Association and is a member of the Executive Management Board of the Massachusetts Bar Association. She is a routine lecturer on defending brain injuries, risk transfer and indemnity issues, best discovery practices and deposition techniques, and OSHA.

JAVIER GARZA is a Claims Manager at CEMEX, a Mexican multinational building materials company headquartered in San Pedro, near Monterrey, Mexico. CEMEX manufactures and distributes cement, ready-mix concrete and aggregates in more than 50 countries. Among other types of claims, Mr. Garza works closely with his team of in house personnel and outside counsel to manage CEMEX's handling of worker's compensation claims and OSHA related issues across the country.

REED W. GRIMM is a shareholder with the Jacksonville, Florida ALFA International member firm Taylor Day, P.A. and is a graduate of Stetson University and Stetson College of Law. His practice includes complex commercial, construction and insurance extra-contractual and coverage litigation. He has been Board Certified in Construction Law by the Florida Bar Board of Legal Specialization and Education since 2007. He is also a Fellow of the American College of Coverage Counsel. He represents general contractors, subcontractors, manufacturers and suppliers in all areas of construction law as well as insurers in coverage matters related to construction claims. He is AV rated by Martindale-Hubbell, has been

included in The Best Lawyers in America, Florida Super Lawyers and Florida Trend's Legal Elite and has been named as one of north Florida's best lawyers by Jacksonville Magazine.

ALICHA GRUBB is an associate with ALFA International member firm Gentry Locke in Roanoke, Virginia, in its commercial litigation and construction practice areas. Alicha handles matters related to contract negotiations, payment disputes, mechanic's liens, construction defects and delay claims for owners, general contractors, subcontractors, suppliers and design professionals. Alicha also handles disputes involving real estate contracts, landlord/tenant issues and other general business matters. Before joining Gentry Locke, Alicha researched criminal and civil motions as a law clerk for the 23rd Judicial Circuit, where she assisted on large projects such as editing the Virginia Model Jury Instructions. Alicha is an award-winning speaker who is also fluent in Spanish.

SCOTT HILLMAN is General Counsel at Kleinfelder. In this role, he is responsible for managing a broad range of legal, risk, contracting, and compliance matters. Prior to joining Kleinfelder, Scott served as General Counsel at Langan Engineering and Region Chief Counsel at AECOM/URS. Before moving in-house, he spent seven years in private practice at Wickwire Gavin. Scott received his B.S. in civil engineering from Lehigh University, M.S. in business from Johns Hopkins University, and J.D. from the University of Baltimore.

GUY HOLLINGSWORTH has been in the claims arena in different capacities for over 25 years. Some of the claims involved sexual and clergy abuse, EPLI, asbestos and mass tort claims including benzene and silica claims, realtor claims construction defects and various professional liability claims, mostly architects and other design professionals. Guy has been heavily involved in THE CLM organization almost since its inception, including teaching at their Claims College for several years. Guy had obtained several degrees including AA in Aviation Engineering and advance degree in Human Factors Engineering.

JASON JUDOVIN currently handles a wide range of high-exposure claim files in Munich Re Specialty Insurance's (MRSI) Complex Claims Team. Prior to joining MRSI in April 2022, Jason handled Professional Liability claims at Markel, focusing primarily on Architects & Engineers matters nationwide. He also handled construction defect claims and complex coverage matters while working in the Complex Casualty group at AIG. Before working in claims, Jason practiced law in New Jersey and New York at Methfessel & Werbel - a mid-sized insurance defense firm. While in private practice, he handled property damage, bodily injury, insurance coverage, contract, and commercial issues. Jason attended Rutgers University and received his Juris Doctor from Seton Hall University School of Law. Between college and law school,

Jason worked in the construction industry, drafting bid proposals for a construction management company and an architectural/engineering firm.

ROCHANNE KEANE is a Product Claims Specialist for Professions for Beazley Group. Prior to this new position, she was the Focus Group Leader for the US Architects & Engineers group and managed the U.S. claims team. As a Product Specialist, she manages high-profile complex claims across Architects & Engineers and Environmental both nationally and internationally. She is an expert in insurance coverage, policy wordings and bad faith litigation and manages complex coverage litigation. Rochanne also facilitates ongoing growth and development of internal claims capabilities across various teams within Beazley and frequently speaks on panels across the construction industry. In her leadership role, she works closely with senior management, underwriters, brokers and insureds to discuss industry trends and claims strategies and provide risk management advice and other thought leadership. Prior to joining Beazley she worked as a Claims Specialist handling claims for design professionals on a nationwide basis for ACE USA. Rochanne was also an Assistant Vice-President and placing broker at HRH Professional Practice Insurance Brokers, Inc. She began her career as a defense lawyer working for two New York based law firms, L'Abbate, Balkan, Colavita & Contini, LLP and Landman Corsi Ballaine & Ford P.C. handling insurance coverage disputes, construction defect litigation and other general insurance defense. Rochanne received her B.A. from the University of California Santa Cruz and J.D. from Pace University. She is admitted to practice law in the states of California, New York and New Jersey.

MAURA KELLY has been with McCarthy Building Companies, Inc. over 26 years, having started her career as a law clerk while attending St. Louis University School of Law. In her current role of Vice President and Associate General Counsel for McCarthy Holdings, Inc., Maura oversees all legal issues on federal projects as well as for the Southern Region of McCarthy. Her focus throughout her career has been on large litigation and claims, including multi-million dollar disputes with the federal government. Additionally, Maura serves as the national legal instructor for McCarthy's Operational Excellence training, which is a multi-part training focusing on the lead person for each project.

RETT KENDALL is a shareholder with the ALFA International firm, Murphy & Grantland, P.A. in Columbia, South Carolina. For more than 23 years, Rett's practice has focused on construction defect and products litigation, representing both contractors and building component manufacturers.

DAVID KOTNIK is responsible for leading Westfield's Surety Claims operations. He is in his 24th year in the surety claim business, and

has spent the last thirteen years with Westfield Insurance. In his current role, David is responsible for managing Westfield's surety claims staff, which currently consists of five claims attorneys and one support staff. David additionally focuses on resolving the most complex contract surety performance and payment defaults and disputes. Prior to joining Westfield, David practiced surety and construction litigation at Frantz Ward LLP. While in private practice, David represented sureties, contractors, subcontractors, and suppliers in all phases of law and litigation. David is a member of the American Bar Association (Fidelity and Surety Law Committee), the Defense Research Institute, and is on the boards of the Surety Claims Institute and the National Bond Claims Association. David is a frequent lecturer on surety and construction law topics. David earned his B.S.B.A. degree from The Ohio State University and his J.D. degree from Cleveland-Marshall College of Law.

ERIC LEPPA is a Principal with Semmes, Bowen & Semmes, the ALFA International member firm in Baltimore, Maryland, practicing in the firm's Litigation practice with a focus on construction, product liability and toxic tort matters. His practice includes both state and federal trial and appellate work, as well as representation of clients before the Maryland Insurance Commissioner. Mr. Leppo has represented contractors on a wide array of matters involving commercial and residential projects across Maryland and in the District of Columbia. He graduated with a Bachelors of Science from Penn State University and received his J.D. from the Marshall Wythe School of Law at William & Mary in 2006. He has been selected as a "Rising Star" since 2015 by Super Lawyers, a Thomson Reuters Business, as published in Baltimore Magazine and Super Lawyers Magazine.

JON LIEB is a partner with the ALFA International firm of McDowell Knight Roedder & Sledge in Mobile, Alabama. While representing clients across several areas of the law, Jon has accumulated diverse experience applicable to a variety of types of litigation. His involvement in numerous complex construction defect cases has equipped him with particular expertise in this area. He has worked extensively with contractors, engineers and architects to successfully investigate, analyze and litigate a myriad of construction related claims. Jon also regularly handles claims involving industrial accidents, marine construction, transportation and premises liability. Jon is actively involved in ALFA International's Transportation and Construction practice groups and is a member of the federation of defense and corporate counsel (FDCC).

NORA E. LOFTUS is a Partner in the Construction Practice Group of the Cleveland, Ohio, ALFA International member firm, Frantz Ward. Nora devotes her practice to the construction industry. Nora helps clients identify, avoid and resolve project disputes at all stages—from project inception drafting and negotiating contracts, while

the project is progressing to prevent issues from escalating and through mediation, litigation and arbitration. With a focus on risk management, Nora believes in helping clients spend their time where it should be spent—developing their businesses. Nora has represented owners, architects, engineers, general contractors, subcontractors, manufacturers, suppliers and sureties, which enables her to spot issues and risks from all sides. Nora also serves as an arbitrator on the Construction Panel of the American Arbitration Association. She is AV Preeminent, the highest ranking, peer review ranked by Martindale-Hubbell and has been named in Chambers USA and Ohio SuperLawyers.

STEVE LOKUS is the Assistant Vice President, Construction Claims for Primary Casualty / Excess claims division, which handles all of the construction claims within Global Specialty nationwide. Navigator's Global Specialty, a Brand of The Hartford, is an international commercial property & casualty specialty insurance company. He has handled and managed various claims including large commercial general liability claims on a primary and excess layer, including claims within large SIRs and wrap policies with a focus on coverage, liability, risk transfer and litigation management for over 20 years. Prior to Hartford, Mr. Lokus was a Claims Supervisor at Fireman's Fund Insurance Company and Branch Manager for West Coast Casualty Service, Inc. He has been a speaker at several seminars, including, but not limited to: West Coast Casualty Construction Defect Seminar, CLM Annual, CLM Construction Seminar, Perrin Conferences, DRI and IRMI. He acted as the secretary of the Construction Defect Claim Managers Association, is an instructor of IRMI's Risk Management Boot Camp, is a member of the CLM Construction Claims Advisory Board, is co-chair for the Perrin Conference's National Construction Defect conference and is the co-Dean (as well as an instructor) for the CLM Claims College - School of Construction.

K. BRETT MARSTON is the head of the construction law practice group at Gentry Locke, the ALFA International member firm in Roanoke, Virginia and a member of the firm's management committee. He has extensive experience in contract negotiations and preparation, payment disputes, mechanic's liens, bond claims, construction defects, delay claims, insurance and OSHA matters. He handles significant construction matters in federal and state courts, arbitration and mediation for general contractors, subcontractors, owners, design professionals and suppliers. Brett is a graduate, with honors, from the George Mason University School of Law and received his undergraduate degree from the University of Virginia. Prior to starting with Gentry Locke in 1994, Brett was a law clerk to the Honorable J. Calvit Clarke, Jr., Sr. Judge of the United States District Court, Eastern District of Virginia (Norfolk Division).

KEVIN MCGRATH has dedicated his 17+ year career to counseling, advising and supporting the design professional and contractor community. Kevin spent the first nine years of his professional life as a practicing attorney who specialized in construction law and professional liability. Kevin gained substantial litigation and transactional experience in that role. Kevin then transitioned to the insurance carrier side of the business. Most recently, Kevin led a claims team at Berkshire Hathaway Specialty Insurance ("BHSI"). In that role, Kevin and his team were responsible for managing and resolving claims brought against law firms, architects, engineers and contractors. Kevin also had significant input with respect to the drafting of policy language and endorsements. Additionally, Kevin spearheaded the risk management program available to BHSI's insureds. Kevin's unique background provides a comprehensive perspective that is ideally suited to provide first class risk management and insurance consultative services to his clients. Kevin firmly believes that early and proactive intervention is the most preeminent means of driving positive claim outcomes.

DONALD MCKAY was born and raised in New Orleans, graduated from Louisiana State University in 1980 and received his Juris Doctor from Loyola University School of Law in 1984. Donald practiced initially as an associate with Hammett, Leake & Hammett and has been with Leake & Andersson, the ALFA International member firm in New Orleans, since its inception in 1987. He has a general civil litigation practice, with emphasis on construction, products liability, environmental, insurance coverage, medical and nursing home malpractice, sexual misconduct and workers' compensation litigation. Donald regularly advises and represents clients in connection with all aspects of litigation, appearing in State and Federal District and Appellate Courts, including the Louisiana Supreme Court and in frequent arbitration hearings and mediation conferences. Donald has been "AV rated" by Martindale Hubbell (highest rating) since 1998 and is a member of the Louisiana State Bar Association where he served as a member of the House of Delegates, the New Orleans Bar Association, Louisiana Association of Defense Counsel and New Orleans Association of Defense Counsel and member of the Defense Research Institute. Donald was recently recognized as a Top Attorney in New Orleans by New Orleans Magazine and has been selected by his peers to be included in The Best Lawyers in America, 2011 through 2019. He has also been recognized for his volunteer work at the New Orleans Pro Bono Project and provides pro bono notary and legal consultation services through Project HELP (Homeless Outreach Project). Donald is a member of the Construction, Healthcare and Workers' Compensation practice groups of the American Law Firm Association International. Donald was selected to be a 2016 CityBusiness Leader in Law! Honorees were selected based on their professionalism and community involvement and achievements that have contributed to the betterment of the community.

CHET MCPHATTER is the Chief Operating Officer of Banker Steel Company in Lynchburg, Va. As project manager and now as COO, Chet has been involved in all aspects of the operations of Banker Steel, which has fabricated structural steel for projects including the Barclays Center in Brooklyn, Hudson Yards in New York City, the Washington Nationals Ballpark in Washington D.C. and the One Vanderbilt project in New York City. Chet is 1993 graduate from Virginia Tech with a B.S. in Civil Engineering.

CHRISTOPHER J. MUELLER is a shareholder with the ALFA International member firm Taylor Day, P.A. in Jacksonville, Florida and Board Certified as a specialist in construction law by the Florida Bar. Chris graduated cum laude from Florida State University and then received his juris doctor from the Walter F. George School of Law at Mercer University. His practice primarily includes the defense of general contractors, subcontractors, designers, and material suppliers in construction matters. He also represents insurance carriers on coverage matters and has litigated commercial and personal injury disputes throughout his career. Chris is AV-rated by Martindale-Hubbell, has been named by Super Lawyers magazine in construction law, has been listed among Jacksonville's best lawyers in 904 Magazine and Jacksonville magazine, is a fellow of the Construction Lawyers Society of America and is a frequent writer and lecturer on a variety of construction law topics. Recently, Chris was also honored with an appointment by Jacksonville's mayor to the City's Construction Trades Qualifying Board.

TAMARA K. NELSON is a shareholder in the firm of Merrick, Hofstedt & Lindsey, P.S., the ALFA International member firm in Seattle, Washington, where she maintains an active litigation practice on behalf of corporate and institutional clients. Her practice focuses on commercial and complex torts, employment law and professional liability. Ms. Nelson has obtained successful outcomes on behalf of her clients in state and federal trial courts and has successfully argued before the Washington State Court of Appeals. Ms. Nelson is admitted to practice in all Washington state and federal courts, as well as the Ninth Circuit Court of Appeals; she is also a member of the King County Bar Association where she served on the Board of Trustees 2011-2014. In addition to her work, Ms. Nelson devotes substantial time to her community through her volunteer work with King County Community Legal Services and Lawyers Helping Hungry children, a Washington nonprofit organization committed to ending childhood hunger.

GEORGE NETSCHKE is Vice President and General Counsel with Barton Malow Company headquartered in Southfield, Michigan. Founded in 1924, Barton Malow Company is a 100% American-owned contractor serving North America in various markets that include commercial, industrial, education, energy, healthcare, manufacturing,

sports and entertainment facilities. With more than 2,000 employees and 15 offices nationwide, the company's core purpose is to Build with the American Spirit: People, Projects and Communities. Recent notable projects include Little Caesars Arena, the redevelopment of Daytona International Speedway, University of Michigan's CS Mott Children's Hospital, University of Notre Dame Campus Crossroads and General Motors Corporation's M5 Program. With a goal of doubling efficiency by 2024, Barton Malow is focused on the future of construction through implementing new engineering technologies and delivering a customer value proposition that is the envy of the industry. Prior to his employment at Barton Malow, George was a private practice trial attorney for 15 years, primarily with Plunkett Cooney. In addition to specializing in construction litigation and the defense of design professions in errors and omissions claims, he litigated a wide variety of general commercial, property damage, product liability and personal injury claims.

KEVIN OWENS is a senior shareholder in the ALFA International Chicago member law firm of Johnson & Bell, Ltd., and is co-chair of the firm's Product Liability Practice Group. His trial practice includes the defense of catastrophic injury, consumer, industrial, medical device, and other product liability actions, construction and general negligence actions, and the litigation of commercial disputes in state and federal courts. His experience also includes the defense of construction product defect actions, and litigation of contract actions at law and equity. He is also a certified mediator, having completed intensive mediation training and certification through Chicago's prestigious Center for Conflict Resolution. As a complex case mediator, Mr. Owens focuses his mediation practice on civil and commercial disputes involving product liability, complex and catastrophic injury cases, and construction matters. He is a graduate of Marquette University and DePaul University College of Law. Mr. Owens is past Chairman of ALFA International's Product Liability and Complex Litigation Practice Group, and is presently a member of its Steering Committee. He is also currently Chair of the ALFA International Board of Directors.

MATT PIWONKA graduated from the University of Arizona School of Law in 1997. After serving three years as a Navy Judge Advocate, he spent four years in private practice in Portland Oregon. Mr. Piwonka then served 14 years as Staff Counsel for a top five commercial liability insurer focusing on construction defect and general liability litigation. Mr. Piwonka joined Installed Building Products' Risk Department (IBP) in 2019. IBP installs thermal insulation, gutters, gas fireplace inserts, shelving, mirrors and other construction materials on a nationwide basis through its over 200 branches. Mr. Piwonka is an in-house general liability claims attorney and collaborates with IBP's branch personnel, third-party claim professionals and defense counsel to achieve cost-effective,

creative claims and litigation results throughout the country. In addition, Mr. Piwonka manages IBP's Contract Review Team and participates in strategic planning within the Risk Department.

BRIAN RAYMORE is the Senior Vice President of Safety & Risk for CentiMark Corporation. CentiMark is the largest industrial and commercial roofing contractor in the United States. Nationally, CentiMark has 65 offices employing approximately 3500 employees across the country and 4 Canadian offices, with revenues in excess of \$757 million dollars. Brian manages all of CentiMark's Safety, Insurance, Subcontracting and Litigation. Additionally he is a Director in CentiMark's Insurance Captive which insures the companies Worker's Compensation, Auto Liability and General Liability Exposures. Mr. Raymore has a Bachelor of Science Degree from Indiana University of Pennsylvania in Safety Management along with 34 years' experience in the construction industry.

DAVID ROYER is the Vice President and General Counsel of Framatome, Inc., formerly known as AREVA, Inc. Prior to his current position, Mr. Royer was Principal Counsel - N.A. Reactor Services and Senior Counsel for AREVA NP, Inc. and Associate General Counsel for General Electric Financial Assurance. He received his BA (with distinction) from Virginia Military Institute and his JD (magna cum laude) from Vermont Law School. Framatome is a designer and supplier of nuclear steam supply systems and nuclear equipment, services and fuel for nuclear power plants. Framatome employs 14,000 people in the United States, Europe and Asia.

LORI-ANN RUSSO-GREEN is responsible for overseeing claims management for Gramercy's Specialty Risk Services Division. With a combined twenty-six years in the Insurance industry, Lori-Ann brings a diversity of experience and a wealth of knowledge to Gramercy Risk Management. Starting her career in the Property and Casualty space in 1996, she garnered experience across the country in both Auto and Homeowners claims. As her career progressed, she transitioned into Commercial claims specializing in SBLL, Contractors, NYLL and IP claims. She excels in litigation management, coverage analysis, risk transfer as well as regulatory and compliance audits. Lori-Ann has claims experience in all 50 states and is well versed in pressing jurisdictional issues. Lori-Ann received her BS in Business Management from Friends University in Wichita, Kansas and her MBA from Baker University in Baldwin City, Kansas.

TERRY SALAZAR is with the ALFA International member firm of Quilling, Selander, Lownds, Winslett & Moser, P.C. in Dallas, Texas. His law practice focuses on construction law and government contracting matters. He represents owners, contractors and subcontractors in all phases of the construction contracting process and the claims/dispute resolution process on private and public works projects. He is a former Army JAGC officer

and was a procurement law attorney in the Office of General Counsel, National Security Agency. He was previously the Senior Vice-President and General Counsel for a large international construction firm. He is a past chairman of the Dallas Bar Association's Construction Law Section, as well as the past Chairman of the City of Dallas Building Code Advisory and Appeals Board. Terry is a frequent speaker on construction contract provisions, disputes and claims and other construction-related topics, having made presentations to the Texas Construction Law Section Annual Conference and several national conferences of construction industry trade associations including the Associated General Contractors (AGC), American Institute of Steel Construction (AISC) and the Steel Erectors Association of America (SEAA).

MARC A. SANCHEZ is a partner with the Cleveland, Ohio ALFA International firm Frantz Ward, LLC. Marc devotes his entire practice to construction law, representing contractors, specialty contractors, subcontractors, owners, developers, design professionals and sureties. He has extensive experience with construction-related litigation, mediation, arbitration, claims management, claims avoidance, insurance coverage and contract negotiation. Marc serves as an arbitrator for the American Arbitration Association and is a Charter Fellow in the Construction Lawyers Society of America. He is named to the Ohio Super Lawyers list, The Best Lawyers in America and is voted AV Preeminent by Martindale-Hubbell.

RYAN SANDERS is a Shareholder with Butt Thornton & Baehr PC, the ALFA International firm in Albuquerque, NM, and serves as the firm's Secretary. He is on the Board of Directors for the New Mexico Defense Lawyers Association and a member of the ALFA International Construction Steering Committee. He practices in multiple areas of complex civil litigation, including commercial, construction and catastrophic casualty. He is licensed to practice law in the State of New Mexico at both the state and federal level and in the United States Court of Appeals for the Tenth Circuit.

ERIC SPIESS is Staff Counsel for DCI Engineers, a structural and civil engineering firm headquartered in Seattle with offices in several western states. He focuses mostly on contracts, insurance and risk management. Prior to going in-house, Eric was an associate at a law firm in Los Angeles focusing on construction litigation. Eric started his career in the A/E/C industry working as a project engineer and field engineer for a general contractor in Los Angeles. He graduated from Loyola Law School in Los Angeles and earned his B.S. in Mathematics/Economics from UCLA.

CASSIDY STARKEY is Senior Vice President and Executive in Charge of Claim Relationships, Strategy & Resolution for Lockton in the Northeast. He serves as a resource and works out of each of Lockton's offices in the Northeast. In this position,

Cassidy focuses his time in 4 key areas. Cassidy develops new business and manages those client relationships. He organizes and develops executive-level Claims relationships (insurance companies, TPA's, law firms, etc.) and authors strategy to positively impact the most complex or high-exposure claims escalated for his attention. Cassidy also has responsibility for recruiting and developing industry-leading broker claim advocacy talent. Cassidy's experience includes working in various capacities for CNA and for several (regional and global) insurance brokerage firms. Cassidy also practiced for years with the prestigious law firm Ballard Spahr, LLP, where he handled various legal matters for manufacturers, financial institutions, public utilities and universities. In 2004, the firm recognized him with its Pro-Bono Award for his work assisting disadvantaged clients. Cassidy is an active supporter of Temple University's Risk Management Program and in 2014 was honored with its Norman Baglini Outstanding Young Alumni Award in Risk Management and Insurance. Cassidy is admitted to practice law in Pennsylvania and New Jersey. He joined Lockton in 2017.

DAVID R. STECHOW is a shareholder with Plunkett Cooney, the ALFA International member firm in Detroit, Michigan. David focuses his practice in various areas of complex litigation, including construction law, product liability and fire and property damage litigation. He represents builders, contractors, management companies, manufacturers and suppliers. David represents his clients in matters involving property and personal injury claims resulting from construction deficiencies or fire and explosions in residential, commercial and industrial settings. Many of these cases include property destruction or serious injury or death. David attended Southern Methodist University and received his bachelor's degree in 1992 from Michigan State University. He received his law degree in 1996 from the University of Detroit Mercy School of Law. David is AV rated by Martindale-Hubbell. In 2010, he was selected as a Fellow of the Litigation Counsel of America (LCA). The LCA is an honorary trial lawyer society. Fellowship in the LCA is highly selective and by invitation only. Fellows are selected based upon superior ethical reputation, as well as excellence and accomplishment in litigation, both at the trial and appellate levels.

IRA SUSSMAN is an attorney with 32+ years' experience in construction law, surety and insurance. Since 2019, Senior claims counsel with IAT- Surety. Prior to IAT - Surety, Ira was Vice President of claims at RLI Insurance and oversaw claims involving surety and claims involving design and miscellaneous professionals. In 2008 at RLI, Ira was part of a team of underwriters and attorneys that managed the implementation of a new insurance product for design professionals. Ira established and supervised a group of claims attorneys who handled E&O claims involving design professionals as well as miscellaneous

professional liability claims. At IAT-Surety, Ira's overall experience provides him with a unique perspective on managing large complex surety claims. He understands the interplay between the parties on a project, as well as the various insurer's coverage positions and the sureties role in a complex construction or commercial claim.

JOHN THOMPSON is the Director of Global Business Systems, for Munters Corporation, a global leader in energy efficient and sustainable air treatment and climate solutions. He is based out of the company's US headquarters in Amesbury, Massachusetts. In his role at Munters, John has global responsibility for contract management and compliance, application engineering, and product software development. John earned a bachelor's degree in engineering from the University of New Hampshire.

MARK VAN DE VOORDE is chief legal and administrative officer and corporate secretary of Victaulic Company, Victaulic LLC and Victaulic International Sarl, a global manufacturer of mechanical joining solutions. Mr. Van De Voorde earned his BBA and JD at the University of Iowa and his MBA at the University of Chicago. Mr. Van De Voorde has global responsibilities for all legal and administrative matters of Victaulic. Prior to joining Victaulic, Mr. Van De Voorde worked in a similar position for Olympus Corporation and as an Investment Banker.

JEREMY WARD is an ALFA International (ALFAI) Construction Practice Group member with the ALFAI firm in Tulsa, Oklahoma, Franden | Farris | Quillin | Goodnight | Roberts + Ward. He routinely represents companies on claims based on product liability, catastrophic incidents and accidents, and professional negligence defending design professionals. He was named a Super Lawyer Rising Star in general litigation for 2011 and a Super Lawyer Rising Star in Personal Injury Defense (Product Liability) for 2012-2017. Jeremy was selected as one of Oklahoma's Top Rated Lawyers of 2014 presented by Legal Leaders. Jeremy is AV® Preeminent™ Peer Review Rated by Martindale-Hubbell. He was elected to the Oklahoma Bar Associations' House of Delegates as an Alternate for 2010-2013 and 2015-2016. Jeremy is admitted to practice before all state and federal courts in Oklahoma and Arkansas and before the Northern District of Oklahoma Bankruptcy Court and the 8th and 10th Circuit Courts of Appeal.

JOHN WATT, member of the ALFA International Kansas City firm, Baker Sterchi Cowden & Rice LLC, graduated with honors from Boston University School of Law in Boston, Massachusetts. He has twice been selected as a Super Lawyer "Rising Star" for both Missouri and Kansas in litigation and defense work. He has extensive experience in defending businesses in multi-million dollar litigation. His practice includes product liability defense, construction litigation, and toxic torts.

John has been the primary attorney for the defense of such litigation from filing the responsive pleading through jury trial. He has both taken and defended expert, corporate representative, and fact witness deposition in hundreds of cases across the country. John has argued in front of the appellate courts for Missouri and Kansas on multiple occasions. He also has extensive experience in arbitrating and mediating matters to successful conclusion for his clients. In the past year, he has prevailed in both a jury and bench trial for construction surety clients. As an active member of the local bar, he provides pro bono legal services for indigent clients through the Volunteer Attorney Project. He is currently on the Steering Committee for the ALFA Construction Law Practice Group.

CODY WEBB has been with Zachry Construction Corporation since October 2006 and currently serves as its General Counsel. As General Counsel, he has represented the Company in the negotiation of contracts for its pursuit of large designbuild projects such as the California High Speed Rail project and reconstruction of the LaGuardia Airport Terminal B. Before joining Zachry, Cody spent 10 years in private practice advising clients primarily in the areas of construction law, independent power projects and corporate law. Cody graduated cum laude from Texas Tech University with a Bachelor's of Science in Mechanical Engineering and he graduated magna cum laude from Texas Tech University School of Law.

SPENCER WIEGARD is a Partner and a member of Gentry Locke's Construction Law and Commercial Litigation practice groups. Spencer focuses his practice in the areas of construction law and construction litigation. He represents general contractors, subcontractors, trade contractors, suppliers and design professionals. Spencer is a member of the Board of Governors for the Virginia State Bar Construction Law and Public Contracts Section and a member of both the Board of Directors and the Legislative Committee for the Associated General Contractors of Virginia ("AGCVA"). He currently serves on the Executive Committee for the Roanoke District of the AGCVA and served as the AGCVA Roanoke District President from 2017-2019. From 2010-2018, Spencer has

consistently been recognized as a Virginia Rising Star in Construction Litigation by "Virginia Super Lawyers." In 2019, Spencer was recognized by Virginia Business Magazine's "Legal Elite" list in the area of Construction Law. He received his BA from the University of Virginia ('01) and his JD from the College of William & Mary, Marshall-Wythe School of Law ('04). Spencer counsels and advises his clients concerning a range of legal issues, including contract drafting and negotiation, preparation and enforcement of mechanic's liens, surety bond claims, professional and occupational licensing issues, OSHA issues, claims, payment disputes and defect disputes. Gentry Locke is the ALFA International member firm in Roanoke, Virginia.

KIRSTEN WORLEY is a Partner and Construction Practice Group leader at Higgs, Fletcher & Mack, LLP, the ALFA International member firm in San Diego, California. Kirsten represents owners, general contractors, subcontractors, developers, lenders, sureties, suppliers and businesses of all sizes from large corporations to local small businesses, and business owners, and her practice spans across the State of California. She was recognized as a Super Lawyer in the San Diego region in 2020 and 2021. Kirsten started her career with the construction litigation boutique firm Watt, Tieder, Hoffar & Fitzgerald, LLP, having practiced in both San Francisco and Orange County, California for years. Kirsten received her B.A. from the University of California, Los Angeles, and her J.D. from the University of California, Berkeley.

GIBBY WRIGHT is a Director at the ALFA International firm McCandlish Holton PC in Richmond, Virginia where he devotes his practice to commercial and real estate litigation, construction law, and other civil litigation. He has been recognized as a Virginia Super Lawyers Rising Star in Civil Litigation: Defense since 2016 and a member of the Virginia Business Legal Elite in Construction since 2019. He received his A.B. from Princeton University and J.D. from Washington & Lee University.

PIJAN WU is a Senior Counsel with ALFA International member firm LCS & Partners in Taipei, Taiwan, where he is head of the Energy

Practice Group. His practice focuses on energy and project finance and he works extensively on international transactions and dispute resolution. He has frequently advised the Taiwan Bureau of Energy on regulatory matters. He is a recognized expert in international trade regulations and WTO rules. In 2012, his Energy Practice Group was given the Corporate International Magazine Global Award – "Energy Law, Firm of the Year" in Taiwan. He received his law degree from the New York University School of Law and an LL.M. from Soochow University School of Law (1989).

BRENT ZIMMERMAN is the Chief Legal Officer and Assistant Secretary of Miller Electric Company. Brent is responsible for all aspects of the legal affairs of Miller Electric Company including contract review, drafting, and negotiation; risk management, bonding, and insurance coverages; employment matters; real estate matters; corporate compliance; acquisitions and special entity formation; licensure; dispute resolution; and advising management and the board of directors. Prior to joining Miller Electric Company, Brent gained experience in private practice with law firms ranging in size from a large, full-service international firm to a Jacksonville-based construction litigation boutique. During his years in private practice, Brent devoted his practice to construction law and litigation. Brent represented owners, developers, contractors, subcontractors, suppliers, manufacturers, and sureties in state and federal courts and before arbitration panels. Brent also represented clients in disciplinary actions brought by licensing boards and in bid protests for government procurement contracts. On the transactional side of construction law, Brent drafted, revised, and negotiated construction contracts on behalf of clients ranging in size from small residential projects to large international projects in the hundreds of millions of dollars. Brent is Board Certified in Construction Law by The Florida Bar's Board of Legal Specialization and Education, which signifies his expertise in this practice area. Brent is also AV Preeminent rated by Martindale-Hubbell, which signifies the highest level of professional excellence in legal knowledge, communication skills, and ethical standards.

PROGRAM INFORMATION

Meeting Location

Ritz-Carlton, Bacara

8301 Hollister Avenue

Santa Barbara, CA 93117

Tel: (805) 968-0100

<https://www.ritzcarlton.com/en/hotels/california/santa-barbara>

Registration

Please contact ALFA International Headquarters to register.

ATTENDANCE IS OPEN ONLY TO MEMBERS OF ALFA INTERNATIONAL AND THEIR INVITED GUESTS
AND IS LIMITED TO AGES 21+.

Attire

The attire for the educational sessions throughout the conference is "business casual". The dinners on Wednesday and Thursday evening are "resort casual" attire. Khaki pants and polo shirts are acceptable for men and dresses, skirts or pants for women. No jackets are necessary at any evening events, but all dinners are outdoors, and it may get chilly, so a sweater or light jacket is recommended. The optional Friday dinner is also "resort casual" and will be an outdoor event.

CLE Credit

ALFA International is an approved CLE provider in Illinois, California & Pennsylvania and certifies this program has been approved for 6.5 hours of general CLE in these states. However, seminars are designed to meet CLE requirements, regardless of jurisdiction. To receive CLE credit outside of these states, attorneys should apply directly to their state's governing CLE board. Helpful links and information on how to apply for course credit are available on the ALFA International website and staff are available to assist with any concerns.

Safe Return to Live Meetings Protocol

The health and safety of all attending ALFA International clients, member attorneys, guests, vendors and staff are of the utmost importance to ALFA International. Please review the [Safe Return to Live Meetings Policy](#) on the ALFA International website for current protocols in place for live meeting attendance. Please note, this policy may change as CDC guidelines are updated so, please check back as the program approaches.

Special Accommodation

If you need any special accommodations, including a nursing room, special dietary meals, ADA access or other needs, please reach out to ALFA International staff in advance of the meeting and we will ensure that necessary accommodations are provided.

Seminar Contact

Michelle Jones

mjones@alfainternational.com

ALFAInternational

980 N. Michigan Ave.

Suite 1180

Chicago, IL 60611

P: (312) 642-2532

www.ALFAInternational.com



ALFA International
THE GLOBAL LEGAL NETWORK

Stay connected with ALFA International

