



**ALFA International**  
THE GLOBAL LEGAL NETWORK



# **BUILDING FUTURE LEADERS**

**2023 FUTURE LEADERS SEMINAR**

**September 7-8, 2023**

**Four Seasons Hotel New Orleans**

**New Orleans, Louisiana**

**[www.ALFAInternational.com](http://www.ALFAInternational.com)**

# BUILDING FUTURE LEADERS

## 2023 Future Leaders Practice Group Seminar

September 7-8, 2023

Four Seasons Hotel New Orleans

New Orleans, Louisiana

Welcome to the Big Easy, where we will tackle the hard things with the next generation of leaders in ALFA International (ALFAI). In an ever-changing legal landscape, up-and-coming attorneys and clients face unique challenges and opportunities. To navigate this environment, it is essential to be equipped with the right knowledge, skills and mindset. Join us as we collaborate to build for the future and empower ALFAI's future leaders.

The 2023 ALFAI Future Leaders Seminar will bring attendees together to learn about emerging legal topics and issues. Through engaging presentations, we will address leadership development, overcoming stereotypes in the workplace and effective succession planning. Additionally, we will explore developing trends in workers' compensation, the future of non-compete agreements and strategies to achieve your goals throughout the litigation process.

We are excited to bring this seminar to the vibrant city of New Orleans where we will be able to enjoy some of the city's traditions and learn more about its history. Attendees will leave equipped with practical strategies and valuable resources for their organizations and their own professional journeys. Together, we can lay a foundation for each other's success and shape the future of the legal profession. We look forward to "Building for the Future" with you.

**Christin Krämer**, *Future Leaders Practice Group Chair*, TIEFENBACHER, Heidelberg, Germany

**Kate Martz**, *Program Chair*, BAYLOR EVNEN WOLFE & TANNEHILL, LLP, Lincoln, NE



## About the Four Seasons Hotel New Orleans

Overlooking the Mississippi River, the Four Seasons' landmark tower is a heritage icon unlocking authentic New Orleans. The hotel offers innovative Louisiana cuisine, a relaxing resort-style pool and NOLA's best views from the 34th-floor observation deck. This grand hotel is a 15-minute walk from the lively French Quarter and 16 miles from Louis Armstrong New Orleans International Airport.

## What is ALFA International?

ALFA International is the premier global network of independent law firms comprised of accomplished trial and business counsel. Founded in 1980, ALFAI was the first and remains one of the largest and strongest legal networks worldwide. ALFAI member firms meet high standards to be part of the network and are well respected by their peers in the legal and business community. ALFAI has 140+ member firms worldwide, including 80 U.S. firms maintaining offices in 95 of the 100 largest metropolitan areas and 60 international firms. Since ALFAI firms are not in direct competition, ALFAI attorneys build strong, trusted relationships with one another. ALFAI's mission is to utilize these relationships to provide high-quality, cost-efficient legal services wherever clients need them. When necessary, ALFAI attorneys can connect clients to their ALFAI colleagues anywhere worldwide whom they trust will handle their client's legal needs with the same attention and care.



**ALFA International**  
THE GLOBAL LEGAL NETWORK

980 NORTH MICHIGAN AVENUE, SUITE 1180 | CHICAGO, ILLINOIS 60611 | 312.642.2532

# SEMINAR SCHEDULE

## THURSDAY, SEPTEMBER 7

4:00 P.M. – 6:30 P.M.

### REGISTRATION & WELCOME RECEPTION

*Four Seasons Hotel New Orleans, The Garden*

6:30 P.M. – 7:30 P.M.

### SECOND LINE BAND PROCESSION TO DINNER

Meet in The Garden at the Four Seasons Hotel New Orleans by 6:30 p.m. for this unique and quintessential New Orleans experience, as The Jaywalkers Second Line Band escorts the group to dinner in our very own ALFAI Future Leaders parade!

7:30 P.M. – 10:30 P.M.

### OPENING NIGHT DINNER

*Galatoire's Restaurant, 209 Bourbon Street*

Spend the evening enjoying classic local fare at historical Galatoire's Restaurant on Bourbon Street.

7:30 P.M. - 8:30 P.M.      Cocktail Hour

8:30 P.M. - 10:30 P.M.      Seated Dinner

## FRIDAY, SEPTEMBER 8

8:00 A.M. – 9:00 A.M.

### BREAKFAST

*Four Seasons Hotel New Orleans, Magnolia Room*

9:00 A.M. – 1:00 P.M.

### PROGRAM SESSIONS

*Four Seasons Hotel New Orleans, River Ballroom*

9:00 A.M. – 9:10 A.M.

### OPENING REMARKS

#### *Speakers:*

**Christin Krämer**, *Future Leaders Practice Group Chair*, TIEFENBACHER, Heidelberg, Germany

**Kate Martz**, *2023 Program Chair*, BAYLOR EVNEN WOLFE & TANNEHILL, LLP, Lincoln, NE

**Jessica Zaroski Bauer**, *Chief Executive Officer*, ALFA INTERNATIONAL, Chicago, IL

9:10 A.M. – 10:00 A.M.

### LET'S GROW! BUILDING FUTURE LEADERS IN THE LEGAL INDUSTRY

Join us as we explore what it looks like to grow, develop, and potentially even change your mindset in how you approach your development as a leader in the legal industry. Be prepared though – growth requires action – so plan to get involved in this presentation as we discuss how a growth mindset can assist you as a future (or perhaps current) leader in the legal industry.

#### *Speakers:*

**Megan Sterchi Lammert**, BAKER STERCHI COWDEN & RICE L.L.C., Kansas City, MO

**Jasmine Kingsley**, *Chief People and Legal Officer*, HUDL, Lincoln, NE

**Michelle Storm**, MONACO COOPER LAMME & CARR, PLLC, Albany, NY

**Matthew McColgan**, GERMAN, GALLAGHER & MURTAGH, P.C., Philadelphia, PA

10:00 A.M. – 10:15 A.M.

### BREAK

10:15 A.M. – 10:45 A.M.

### EMERGING TRENDS IN AND AROUND WORKERS' COMPENSATION

What is the direction that workers' compensation systems and courts are moving? With an ever-changing working world, so too is workers' compensation changing. This discussion will explore the current trends in workers' compensation, including remote and hybrid work, arising out of standard and employment-related risks, as well as the exclusive remedy defense.

#### *Speakers:*

**Tom Shires**, BAYLOR EVNEN WOLFE & TANNEHILL, LLP, Lincoln, NE

**Bret Michalsky**, *Workers' Compensation Claims Supervisor*, GREAT WEST CASUALTY COMPANY, South Sioux City, NE

**Kendra Garstka**, HALL & EVANS, LLC, Denver, CO

**Ryan Funderburg**, QUILLING, SELANDER, LOWNDS, WINSLETT & MOSER, PC, Dallas, TX



# SEMINAR SCHEDULE

**10:45 A.M. – 11:15 A.M.**

## **FREE TO COMPETE: EXPLORING THE IMPLICATIONS OF THE FTC'S PROPOSED RULE BANNING NON-COMPETE AGREEMENTS**

Curious about how the Federal Trade Commission's proposed rule banning non-compete agreements could affect you or your clients? This session will analyze the impact of the proposed new rule on employers and employees, covering the affirmative steps employers can take to comply with the rule and any possible alternatives available to employers. This session will also explore anticipated litigation stemming from the proposed rule, potential penalties for noncompliance and any exceptions to the proposed rule. Attendees will gain a better understanding of the proposed rule and its implications for the legal landscape.

### **Speakers:**

**Phoebe Barber**, PHILLIPS MURRAH P.C., Oklahoma City, OK  
**Hannah Schmidt**, *Director, Assistant General Counsel*, AMERITAS LIFE INSURANCE CORP, Lincoln, NE  
**Job Fickett**, TAYLOR, DAY, GRIMM & BOYD, Jacksonville, FL  
**Kathleen Federico**, MORRISON MAHONEY LLP, Boston, MA

**11:15 A.M. – 11:25 A.M.**

## **BREAK**

**11:25 A.M. – 11:55 A.M.**

## **LITIGATION SKILLS TO LET THE GOOD TIMES ROLL AND ACHIEVE CLIENT GOALS**

Make your clients say "Who Dat?" Join us to discuss the litigation skills necessary for young attorneys to build client relationships, succeed in discovery and depositions and Laissez Les Bon Temps Rouler. This panel will focus on gaining client trust and achieving client goals at each phase of litigation to allow young attorneys to transition into the role of experienced and valuable counsel.

### **Speakers:**

**Lucas Davidson**, LEWIS THOMASON, Nashville, TN  
**Bethany Champion**, *Director of Claims*, ENVISION, Nashville, TN  
**Julia Jimenez**, DANIEL COKER, Oxford, MS  
**Zachary Trail**, WRIGHT LINDSEY JENNINGS, Rogers, AR

**11:55 A.M. – 12:20 P.M.**

## **STAND BY ME: WHEN CLIENTS AND LAW FIRMS STAND TOGETHER TO SUPPORT MEANINGFUL DIVERSITY, EQUITY AND INCLUSION**

This session will examine the strengths of clients and law firms jointly supporting diversity, equity and inclusion efforts including the importance of DEI programs, examples of internal and external DEI efforts and pragmatic approaches to follow through with meaningful DEI efforts.

### **Speakers:**

**Brooke Churchman**, HALL & EVANS, LLC, Denver, CO  
**Stephen Myers**, *Director & Senior Counsel - Litigation*, MATCH GROUP, Dallas, TX  
**Eugene Lee**, *Senior Counsel*, UBER TECHNOLOGIES, INC., San Francisco, CA  
**Molly Teas**, HIGGS FLETCHER & MACK, LLP, San Diego, CA

**12:20 P.M. – 12:30 P.M.**

## **BREAK**

**12:30 P.M. – 12:55 P.M.**

## **SUCCESSION: "THE FUTURE IS REAL. THE PAST IS ALL MADE UP."**

Whether you are ascending to the top of Waystar Royco or arranging for the Baby Boomers to retire, succession planning is complicated. This panel will explore all of the delicate, sensitive issues that arise with modern-day succession planning, including how to handle a Logan Roy, COVID's impact and hybrid working environments and client management and notification. As decision-makers and lawyers with an eye toward future growth, this session is geared toward developing successful succession strategies.

### **Speakers:**

**Chris Green**, CRABBE, BROWN & JAMES LLP, Columbus, OH  
**Alan C. Nolley, Jr.**, *Senior Litigation Counsel*, FLYNN RESTAURANT GROUP, San Francisco, CA  
**Andrew Douberly**, DICKINSON & GIBBONS, P.A., Sarasota, FL

# SEMINAR SCHEDULE

12:55 P.M. – 1:00 P.M.

## CLOSING REMARKS

### Speakers:

**Christin Krämer**, *Future Leaders Practice Group Chair*,

TIEFENBACHER, Heidelberg, Germany

**Kate Martz**, *2023 Program Chair*, BAYLOR EVNEN WOLFE & TANNEHILL, LLP, Lincoln, NE

1:00 P.M. – 2:00 P.M.

## LUNCH

*Four Seasons Hotel New Orleans, River Ballroom*

## OPTIONAL ACTIVITIES

3:00 P.M. – 5:00 P.M.

### NEW ORLEANS SCAVENGER HUNT\*

Join fellow attendees for a memorable adventure around this historical city! The group will be split into teams of 4-6 people to compete in a series of picture clue challenges and puzzles for a prize.

6:30 P.M. – 9:30 P.M.

### CLOSING NIGHT DINNER\*

*Arnaud's Restaurant, 813 Bienville Street*

*\*Prior registration required.*

# SPEAKERS



**PHOEBE BARBER** is an associate with Phillips Murrah P.C., ALFA International's member firm in Oklahoma City, Oklahoma. She is a litigation attorney who represents both individuals and public companies in a wide range of civil litigation matters in state and federal courts. Her practice includes labor and employment matters, contractual disputes, construction disputes, and commercial debt collection matters. Phoebe attended the University of Oklahoma College of Law, where she earned the American Jurisprudence Award for Civil Procedure II and was on the Dean's Honor Roll. She served as the research editor and candidate mentor for the Oklahoma Law Review and was a Phi Delta Phi Legal Honor Society member. Phoebe also served as a mentor on the Dean's Leadership Council, was selected as a Dean's Leadership Fellow, and was selected to serve on the Academic Appeals Board. While in law school, Phoebe had the opportunity to clerk as a judicial intern for the Honorable Judge Rob Hudson of the Oklahoma Court of Criminal Appeals. Phoebe was born and raised in Oklahoma City and received a bachelor's degree from Vanderbilt University in Nashville, Tennessee. She enjoys Thunder basketball, OU football and cheering on her Vanderbilt Commodores in her spare time.



**ALFA International**  
THE GLOBAL LEGAL NETWORK

980 NORTH MICHIGAN AVENUE, SUITE 1180 | CHICAGO, ILLINOIS 60611 | 312.642.2532



# SPEAKERS



**JESSICA ZAROSKI BAUER** joined ALFA International (ALFAI) in 2004 as a Coordinator of Events & Member Services. She then worked for several years as a Marketing Manager, Chief Events Officer and Chief Operating Officer. After 17 years with the association, she accepted her current role as Chief Executive Officer. In this position she is the strategic thought leader of the organization, working closely with the Board of Directors and the various ALFAI committees. She manages headquarters staff and maintains constant communication with association members. Jessica oversees the member recruitment, development and retention programs as well as the marketing and business development initiatives for the organization. Prior to joining ALFA International, she worked in the marketing department of the Chicago-based law firm of Gardner, Carton & Douglas, LLP (now Faegre Drinker Biddle & Reath). She is a graduate of the University of Iowa Tippie College of Business (Go Hawkeyes!) and is an avid college football fan. In her spare time Jessica can be found enjoying family time with her husband Harry and her two young daughters, Greta and Vivian. She also enjoys swimming in Lake Michigan, playing beach volleyball and watching Oscar nominated movies.



**BETHANY CHAMPION** is an accomplished professional with extensive experience in claims and risk management. Currently serving as the Director of Claims - Casualty, Property and Executive Lines at Envision Healthcare, Inc., Bethany oversees the reporting and investigation of various claims, including Workers' Compensation, Auto Liability/Property Damage, Employment, Cyber, Property, and Contingent Business Interruption claims. Bethany is responsible for reconciling and tracking claims retentions within the Captive insurance program and Risk Retention Program. With a keen eye for detail, Bethany develops reports and analyzes loss data to identify adverse trends, and provide recommendations for risk mitigation. Furthermore, Bethany plays a pivotal role in claims strategy, defense crafting and training on claims reporting and Workers' Compensation benefits.



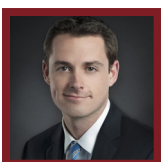
**BROOKE CHURCHMAN** is special counsel with Hall & Evans, LLC, ALFA International's member firm in Denver, Colorado. Brooke's practice centers on civil litigation with matters involving transportation, premises liability, employment, oil and gas, professional liability and insurance. She recently relocated to Colorado after practicing civil litigation in Austin, Texas. Before entering private practice, she served as a Law Clerk to the Honorable Judge Raymond Moore in the U.S. District Court for the District of Colorado and as assistant general counsel with the Oklahoma Department of Public Safety.



# SPEAKERS



**LUCAS DAVIDSON** is a shareholder with Lewis Thomason, an ALFA International member firm in Nashville, Tennessee. Lucas is dedicated to helping companies and business-minded individuals navigate complex legal issues in franchise formation and litigation, business litigation, business advice, employment issues and dealmaking. He is committed to serving his clients' needs, ensuring their success in today's ever-evolving business landscape. Recently, Lucas became a certified Rule 31 Mediator in Tennessee, further enhancing his ability to facilitate productive negotiations and find creative solutions to complex disputes. In addition to his corporate background, Lucas has an extensive litigation practice in Tennessee with a specific emphasis on the defense of high-exposure cases in professional liability, healthcare liability, transportation and trucking, construction and personal injury litigation. He has argued complex issues in courts throughout Tennessee and Kentucky in both state and appellate courts.



**ANDREW DOUBERLY** is a partner with Dickinson & Gibbons, P.A., the ALFA International member firm in Sarasota, Florida. Andy's practice focuses on defending personal injury matters, including commercial transportation litigation, auto claims and premises claims. Andy has tried numerous cases throughout the state of Florida. Andy graduated from the University of Florida with a B.A. in English, earned his J.D. from Florida State University, and is a member of ALFAI's Future Leaders, Transportation and Hospitality & Retail practice groups.



**KATHLEEN FEDERICO** is a partner with Morrison Mahoney LLP, the ALFA International firm in Boston Massachusetts. She concentrates her practice in the areas of employment law, premises liability and product liability. Kathleen has obtained successful outcomes on behalf of her clients in trials in the Massachusetts Superior Court and the state District Court. She has also successfully argued before the Appeals Court.



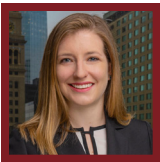
**JOB FICKETT** is an attorney with Taylor, Day, Grimm & Boyd, ALFA International's member firm in Jacksonville, Florida. He is an experienced litigator. Combining persuasive writing, tenacity in the courtroom and an aptitude for problem-solving, Job's practice is focused on offering creative legal and business solutions across numerous litigation practice areas. Job also regularly advises entrepreneurs and small-to-midsized businesses from start-up phases through corporate governance issues and best practices for litigation avoidance. He is admitted to practice in all state and federal courts in Florida. In his career, Job has represented general contractors, subcontractors, banks, real estate brokerages, bankruptcy and personal trustees, software developers, insurance carriers, grocery stores, law firms, medical device manufacturers, charter airlines and family businesses, to name a few. He has significant experience representing both plaintiffs and defendants. Before joining Taylor, Day, Grimm & Boyd, Job was an attorney at a regional business litigation boutique and started his career at a nationwide litigation firm.



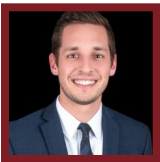
# SPEAKERS



**RYAN FUNDERBURG** is an attorney with Quilling, Selander, Lownds, Winslett & Moser, P.C., ALFA International's member firm in Dallas, Texas. Ryan represents clients in a variety of matters, from breach of contract and embezzlement to personal injury disputes. Specifically, his practice focuses on transportation and logistics matters, business and commercial disputes, premises liability, non-subscriber disputes, construction and real estate litigation.



**KENDRA GARSTKA** is an attorney with Hall & Evans, LLC, ALFA International's member firm in Denver, Colorado. Kendra focuses her practice on the representation of insurance carriers and employers in Colorado workers' compensation and subrogation cases. Kendra defends and argues cases before the Colorado Division of Workers' Compensation and the Colorado Court of Appeals.



**CHRIS GREEN** is an associate with the ALFA International member firm of Crabbe, Brown & James LLP in Columbus, Ohio. He brings professional intensity and reliability to Crabbe, Brown & James. Chris grew up in Dublin and received his legal training at The Ohio State University. His local roots and passion for Columbus continue the firm's rich tradition in this city. While in law school, Chris was a managing editor of the Ohio State Law Journal and trained at the local level in the public sector, federal level under a U.S. District Court Judge and in the private sector. Chris provides a unique and thoughtful perspective on all facets of a case. His practice focuses on all aspects of litigation for both plaintiff and defense. In 2016, Chris worked as a law clerk at Crabbe, Brown & James; thus, his familiarity with the brand is well-established. Prior to joining the firm full-time, Chris worked at a boutique litigation firm focusing on labor and employment matters.



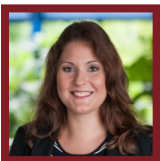
**JULIA JIMENEZ** is a shareholder with Daniel Coker, the ALFA International member firm in Oxford, Mississippi. She focuses her practice on general defense litigation, including product liability and hospitality, in both state and Federal courts. Before transitioning to civil litigation, Julia's practice was devoted to family law. Julia has the distinction of being recognized as a Best Lawyers in America® "Ones to Watch" in two practice areas: personal injury litigation defense and product liability defense. Julia is a member of the Steering Committee of ALFA International's Hospitality & Retail Practice Group and the Future Leaders Practice Group. Julia is the Women's Initiative Liaison to the 2023 ALFA International Hospitality & Retail Practice Group. She is very active in the Mississippi Bar, including serving as Oxford Regional Chair of the High School Mock Trial Competition for eight years. She is a member of the Advisory Board of the L.O.U. Barksdale Boys and Girls Club and is a life member and past president of the Junior Auxiliary of Oxford. Julia has two children and enjoys yoga, reading and DIY projects.







**JASMINE KINGSLEY** is Chief People and Legal Officer at Hudl, a global leader in sports video technology headquartered in Lincoln, Nebraska. She began her legal career in private practice at law firms in San Francisco and Silicon Valley and focused her practice on technology and intellectual property transactions. She joined Hudl as General Counsel in 2015 and currently heads the company's global Legal, People Operations and Brand/Communications teams. Jasmine is an active member of the State Bar of California (admitted 2012) and the Nebraska State Bar Association (admitted 2014). She currently serves as chair of the board of directors of Rabble Mill, a member of the Bryan Health Board of Trustees, as well as a member of the board of directors of Union Bank & Trust, the Cooper Foundation, the Lincoln Community Foundation and the Lincoln-Lancaster County Board of Health. She formerly served as chair of the Local Business Strategies Subcommittee of the Mayor's Economic Recovery Task Force (2020 - City of Lincoln, NE). Jasmine was the 2020 recipient of the Lincoln Young Professionals Group (YPG) Young Professional of the Year award. She received a B.A. in International Relations from the University of Pennsylvania (2005) and a J.D. from Harvard Law School (2011). Jasmine resides in Lincoln, NE, with her husband, Christopher Kingsley, and two children, Alexander (5) and Aurora (2).



**CHRISTIN KRÄMER** is a partner with Tiefenbacher, ALFA International's member firm in Heidelberg, Germany. Christin co-heads Tiefenbacher's International Division and is the leading partner of its corporate and commercial practice. Christin advises both German and international clients in all fields of corporate and commercial law, with a particular focus on cross-border transactions. In January 2019, she obtained the distinction of being a Certified Specialist in Commercial and Corporate Law. She is, therefore, well experienced not only in transactional law but in all ramifications of corporate law, such as disputes between shareholders, litigation and directors' and officers' liability. Christin currently serves as chair of ALFAI's Future Leaders Practice Group and is the liaison to the International Law Practice Group.



**MEGAN ("MEG") STERCHI LAMMERT** is a member of Baker Sterchi Cowden & Rice L.L.C., ALFA International's member firm in Kansas City, Missouri. Meg's practice is concentrated in defending personal injury, premises liability and product liability matters. Meg has focused on advocating for and obtaining successful outcomes for numerous clients, including those within the pharmaceutical and medical device, trucking and insurance industries. She has been selected for inclusion in Best Lawyers in America: Ones to Watch, Kansas City Metropolitan Area for Personal Injury Litigation – Defendants and Product Liability Litigation – Defendants and recognized as a Missouri & Kansas Super Lawyers: Rising Star in the practice area of Personal Injury General: Defense. Meg is a member of ALFAI's Future Leaders Practice Group, the Product Liability & Complex Torts Steering Committee, and the Women's Initiative Steering Committee. At her firm, Meg is a co-chair of Baker Sterchi's Diversity & Inclusion Committee and is actively involved in the firm's Recruitment Committee.



# SPEAKERS



**EUGENE LEE** is in-house counsel at Uber Technologies, Inc. He is on the insurance litigation team, handling matters primarily in California, Nevada, Oregon and Washington. He is also a member of the Defense Counsel Task Force at Uber, which is tasked with identifying new law firms to include in Uber's defense counsel panel that is committed to diversity and inclusion. Prior to working at Uber, Eugene worked at several large national law firms and worked with various gig economy companies.



**KATE MARTZ** is a partner with Baylor Evnen Wolfe & Tannehill, LLP, the ALFA International member firm in Lincoln, Nebraska. She is a member of the firm's litigation practice group and handles matters involving transportation, premises liability, employment and professional malpractice. Kate has successfully tried cases in Nebraska and handled appeals in the 8th U.S. Circuit Court of Appeals. Kate strives to simplify complex issues and provide practical advice throughout litigation to best achieve her clients' goals. Kate is a member of ALFA's Future Leaders Practice Group, Transportation steering committee, Women's Initiative steering committee and the Diversity and Inclusion Leaders Forum. In addition, she is a leader and firm representative in initiatives supporting diversity and inclusion in the legal field.



**MATTHEW McCOLGAN** is a partner with German, Gallagher & Murtagh, P.C., the ALFA International member firm in Philadelphia, Pennsylvania. Matt is a key player in the firm's transportation practice, defending trucking and transportation companies in cases ranging from catastrophic injuries to property damage and cargo claims. He also handles products and premises liability, as well as other casualty matters. Matt's practice consists not only of defending transportation matters in suit but also of providing 24/7 support to investigate accidents and losses when they occur and counseling clients about how to manage losses pre-suit. His practice covers all of New Jersey and Pennsylvania at both the state and federal level. Beyond the billable hour, Matt is a member of the Philadelphia Association of Defense Counsel's Executive Committee and participates on the steering committees for both ALFA's Transportation and Insurance practice groups. Matt is also a member of ALFA's Future Leaders Practice Group and TIDA's Young Professionals Committee.



**BRET MICHALSKY** is a Workers' Compensation Claims Supervisor for Great West Casualty Company out of South Sioux City, NE. Great West Casualty primarily focuses on providing insurance coverages to the trucking industry. Bret has worked in insurance for over 10 years and started in Long-Term Care prior to pursuing a career in Workers' Compensation. He holds multiple insurance designations to include an Associate in Claims (AIC), Supervisory Management (SM), Associate in Insurance Services (AIS), Associate in Management (AIM) and CA Claims Practitioner in Workers' Compensation (CPWC).

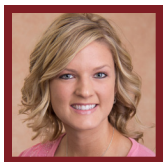


**STEPHEN MYERS** is a Director & Senior Counsel of Litigation at Match Group, where he handles consumer, business and employment litigation matters for Match Group's global portfolio of brands, including, among others, Tinder®, Match®, Hinge® and OkCupid®. Prior to joining Match Group, Stephen worked as a litigation and labor and employment attorney for Southwest Airlines, and, prior to that, as a litigation associate at Norton Rose Fulbright. Stephen received his undergraduate and law degrees from the University of Texas at Austin.

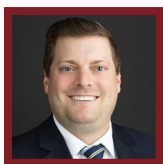
# SPEAKERS



**ALAN C. NOLLEY, JR.**, serves as Senior Litigation Counsel for Flynn Restaurant Group, America's largest restaurant franchisee, which owns and operates over 2,300 restaurants nationwide. Alan represents the Company in a wide range of litigation involving business, commercial and tort disputes and provides legal support for its operations, including strategic counsel on pre-litigation, risk management and contract issues. Alan is an experienced trial lawyer who has managed all aspects of litigation and has played a lead role in trials, as well as arbitration. Prior to joining Flynn Restaurant Group in 2021, Alan was in private practice in the San Francisco office of a regional law firm where he served on its "parachute" trial team.



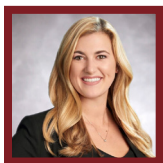
**HANNAH SCHMIDT** is Director, Assistant General Counsel at Ameritas Life Insurance Corp. (Ameritas), a national life insurance company based in Lincoln, Nebraska. At Ameritas her practice area primarily involves providing strategic legal advice and counsel on employment law and employee benefits matters and handling employment-related demands, charges, and litigation. Hannah serves as a Board member for the Lancaster County Personnel Policy Board in Lincoln, Nebraska. She is on the Board of Directors for Fresh Start, a Lincoln-based nonprofit that provides housing and support to women in the Lincoln community. She is a member of the Nebraska State Bar Association and serves as Secretary for the Corporate Counsel section of the Nebraska State Bar Association.



**TOM SHIRES** is an attorney with Baylor Evnen Wolfe & Tannehill, LLP, ALFA International's member firm in Lincoln, Nebraska. Tom handles workers' compensation matters in Nebraska for a broad range of clients, from local family-owned businesses to large national corporations. Tom focuses his practice on understanding his client's business and tailoring individual workers' compensation and litigation strategies to meet the individual business's needs. Tom has given numerous presentations to employers and insurers on workers' compensation issues.



**MICHELLE STORM** is an attorney with Monaco Cooper Lamme & Carr, PLLC, ALFA International's member firm in Albany, New York. Michelle represents physicians, health professionals, hospitals, healthcare facilities, pharmacists and pharmacies, concentrating on professional liability matters. In addition, she litigates matters for individuals, local businesses and national corporations in the professional services, hospitality and retail, manufacturing and food and beverage industries. Michelle received her undergraduate degree from the State University of New York and her law degree from Albany Law School.



**MOLLY TEAS** is an attorney with Higgs Fletcher & Mack, LLP, ALFA International's member firm in San Diego, California. Molly defends trucking companies and other commercial entities in personal injury matters. Additionally, she has experience representing local tribal nations and defending them in both state court and tribal court.



**ZACHARY TRAIL** is an attorney with Wright Lindsey Jennings, the ALFA International member firm in Rogers, Arkansas. Zach focuses his practice on litigation, including commercial litigation and insurance defense.

# SOCIAL EVENTS



## THURSDAY, SEPTEMBER 7

### Second Line Procession to Dinner

*Take part in this lively  
New Orleans traditional parade that  
will take you to dinner in style.*

**6:30 P.M. – 7:30 P.M.**

### Dinner on Bourbon Street

**7:30 P.M. – 10:30 P.M.**

Galatoire's Restaurant  
209 Bourbon Street

## FRIDAY, SEPTEMBER 8

### OPTIONAL ACTIVITIES

*\*Prior registration required.*

### New Orleans Scavenger Hunt\*

*Bond with your team as you explore  
New Orleans through a series of clues,  
challenges and puzzles.*

**3:00 P.M. – 5:00 P.M.**

### Closing Night Dinner\*

**6:30 P.M. – 9:30 P.M.**

Arnaud's Restaurant  
813 Bienville Street



**ALFA International**  
THE GLOBAL LEGAL NETWORK

980 NORTH MICHIGAN AVENUE, SUITE 1180 | CHICAGO, ILLINOIS 60611 | 312.642.2532

# GENERAL INFORMATION

## LOCATION

### FOUR SEASONS HOTEL NEW ORLEANS

2 Canal St, New Orleans, LA 70130  
(504) 434-5100

### [Hotel Website](#)

## REGISTRATION

Please contact ALFAI Headquarters to register.

ATTENDANCE IS OPEN ONLY TO MEMBERS OF ALFA INTERNATIONAL AND THEIR INVITED GUESTS AND IS LIMITED TO AGES 21+.

## ATTIRE

The attire for the educational sessions and social event is "business casual." Khaki pants and polo shirts are acceptable for men and dresses, skirts or pants for women. Jackets are REQUIRED for the opening night dinner at Galatoire's. Dress codes Thursday and Friday night dinners are strictly enforced. No shorts, T-shirts or flip flops will be permitted.

## SPECIAL ACCOMMODATION

If you need any special accommodations, including a nursing room, special dietary meals, ADA access or other needs, please reach out to ALFAI staff in advance of the meeting and we will ensure that necessary accommodations are provided.

## CLE CREDIT

ALFA International is an approved CLE provider in Illinois, California & Pennsylvania and certifies this program has been approved for three hours of general CLE in these states. However, seminars are designed to meet CLE requirements, regardless of jurisdiction. To receive CLE credit outside of these states, attorneys should apply directly to their state's governing CLE board. Helpful links and information on how to apply for course credit are available on the ALFA International website and staff are available to assist with any concerns.

## SEMINAR CONTACT

Arielle Aaron

[aaaron@alfainternational.com](mailto:aaaron@alfainternational.com)

